



Student: Giacomo Premoli  
Semester: Spring 2020  
Professor: Dr. Szabó Árpád

# PLAN OF BUDAPEST






In this plan, the main elements of connection in the city of Budapest are highlighted, such as:

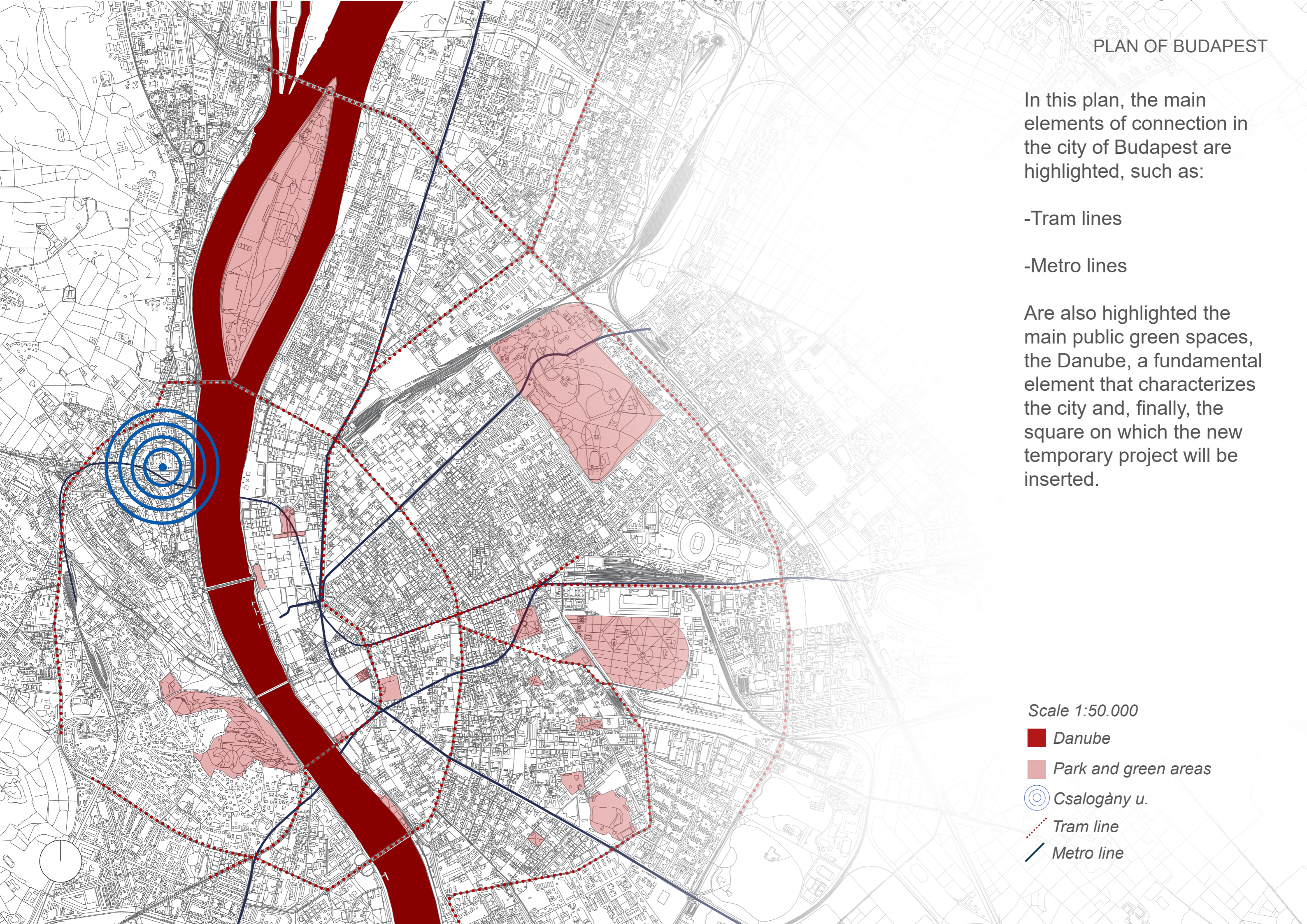
-Tram lines

-Metro lines

Are also highlighted the main public green spaces, the Danube, a fundamental element that characterizes the city and, finally, the square on which the new temporary project will be inserted.

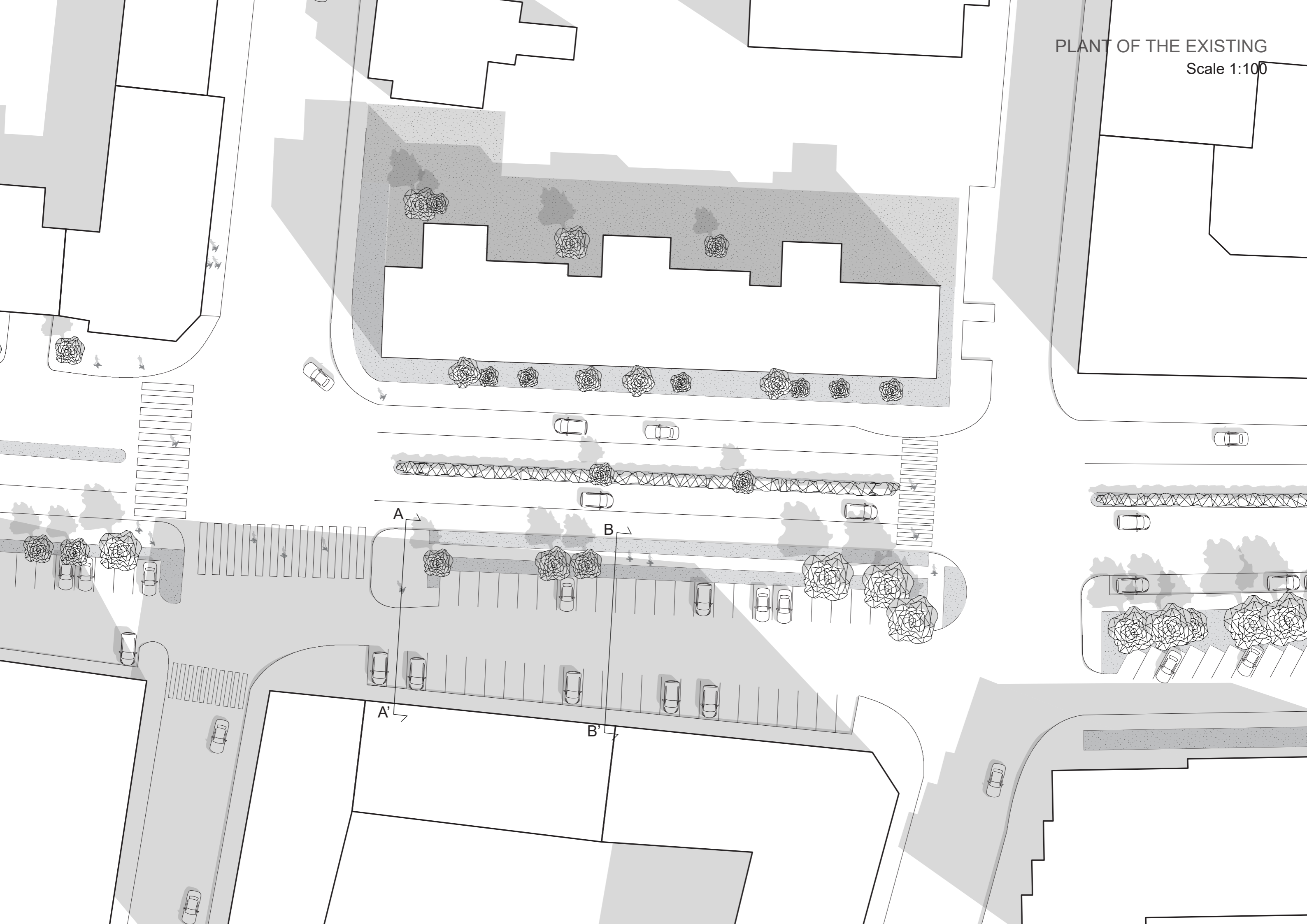
Scale 1:50.000

-  Danube
-  Park and green areas
-  Csalogány u.
-  Tram line
-  Metro line

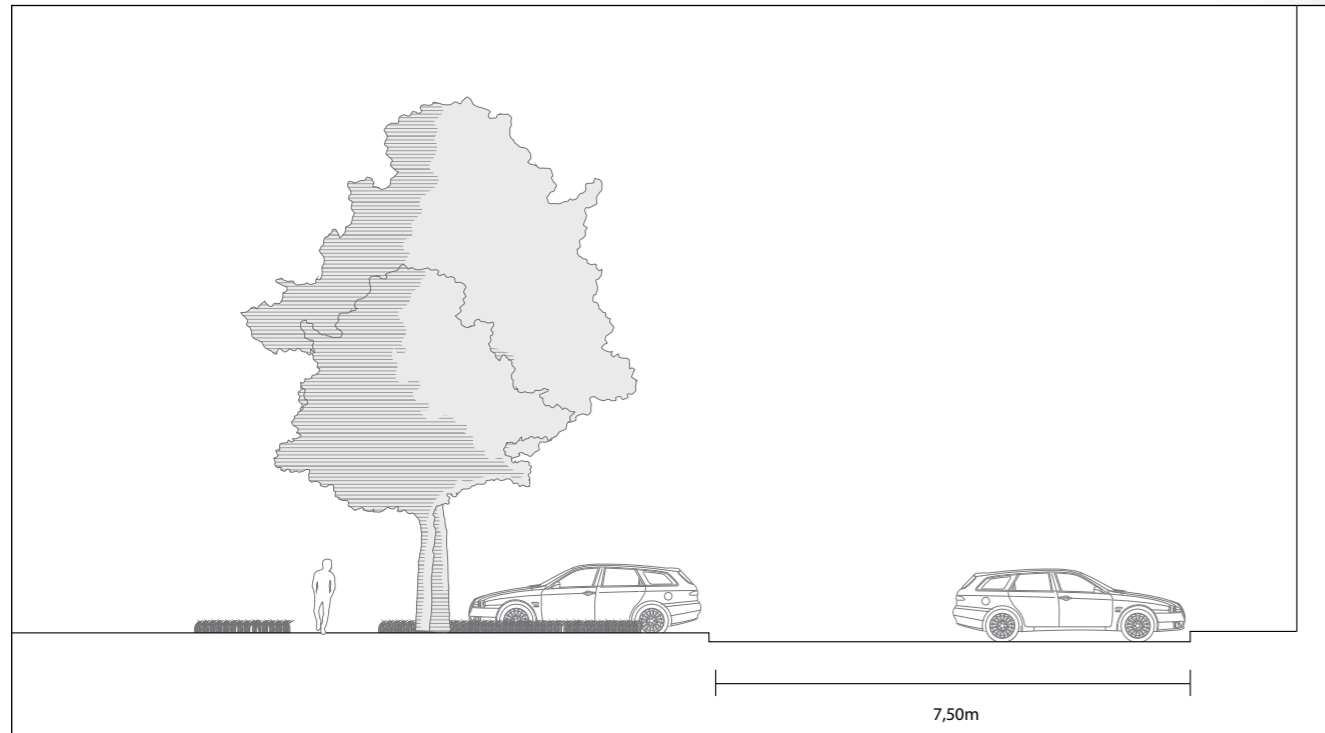


PLANT OF THE EXISTING

Scale 1:100

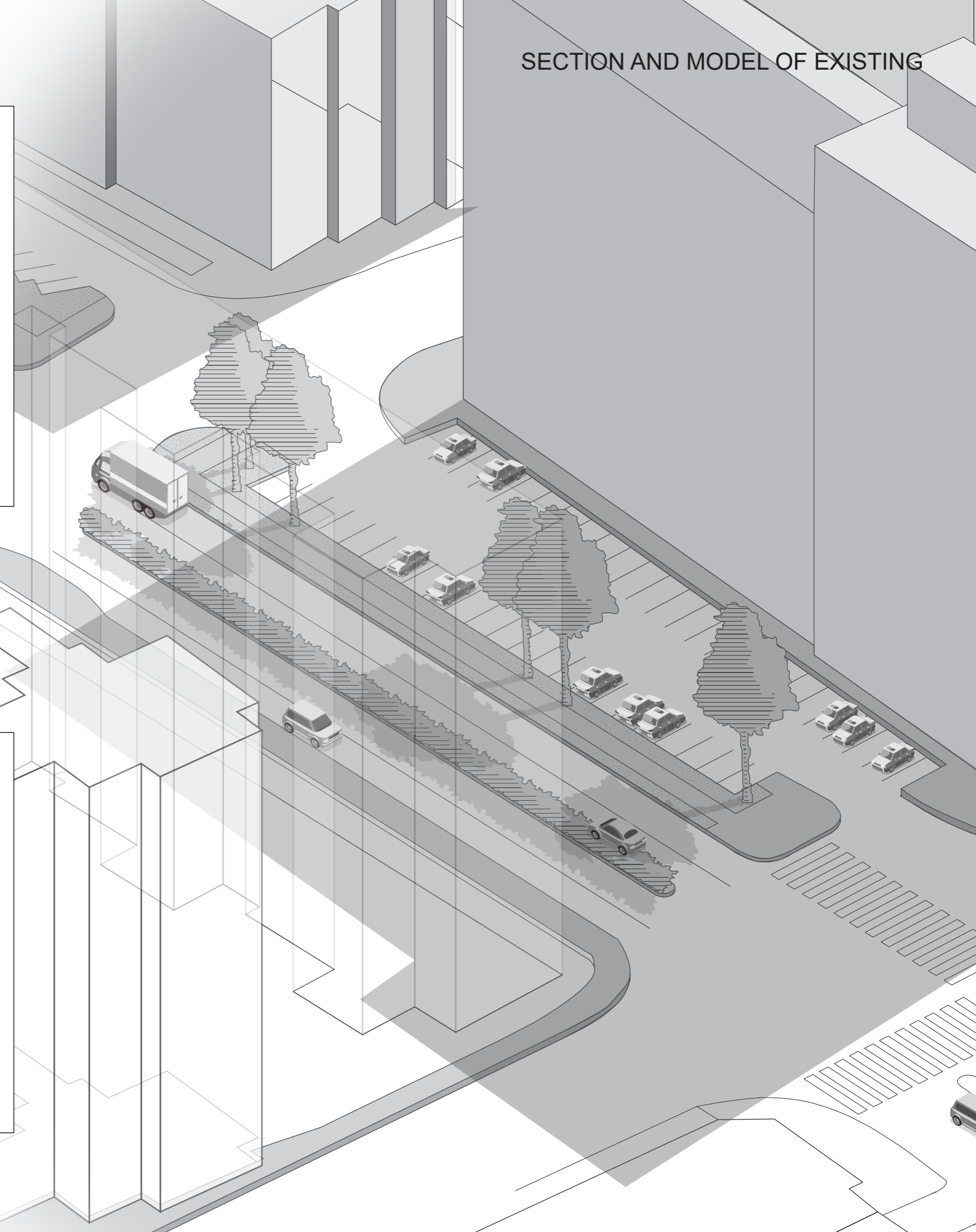
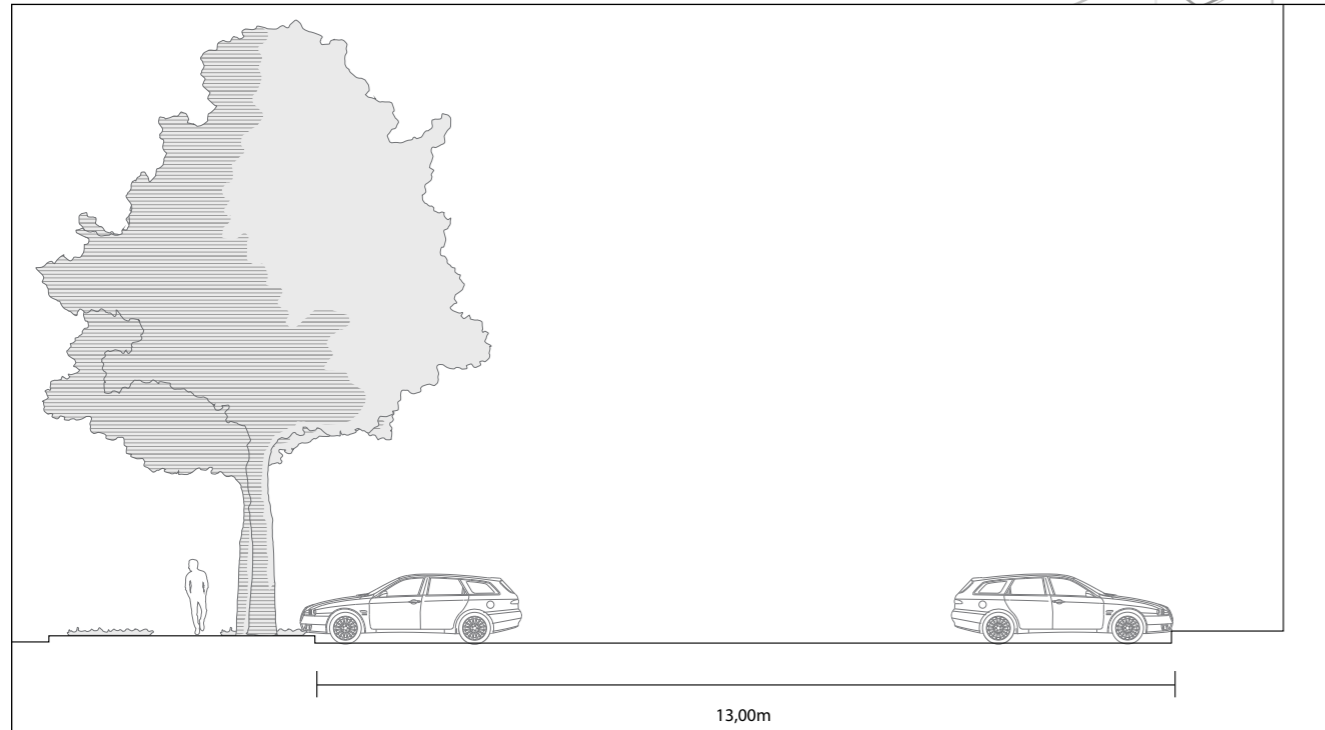


Section A-A' Scale 1:200

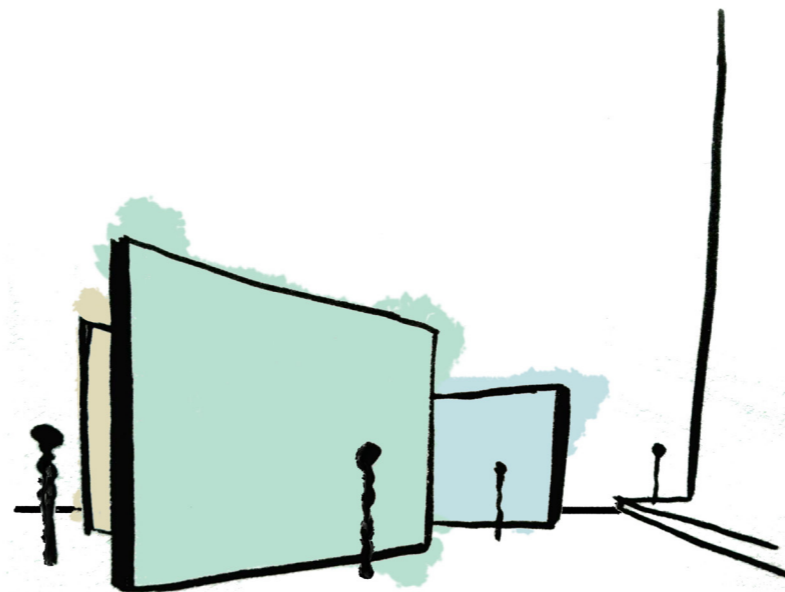
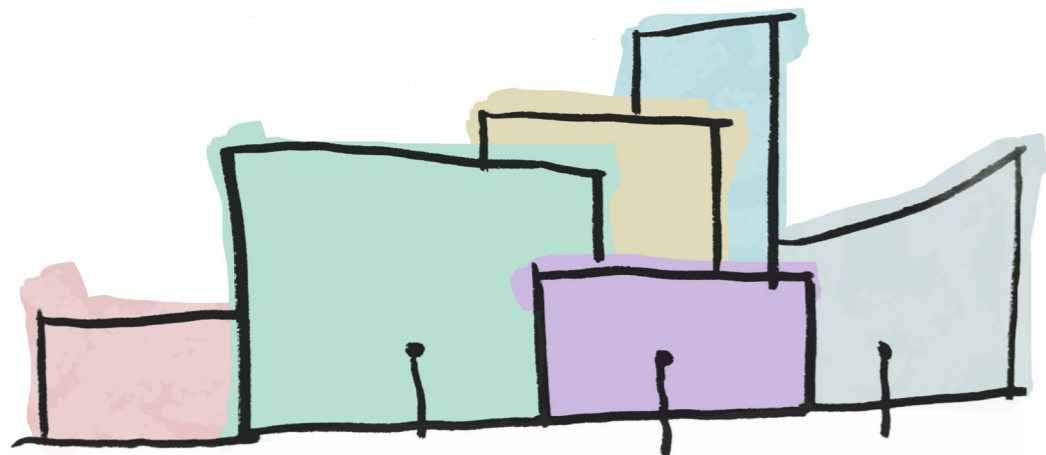


SECTION AND MODEL OF EXISTING

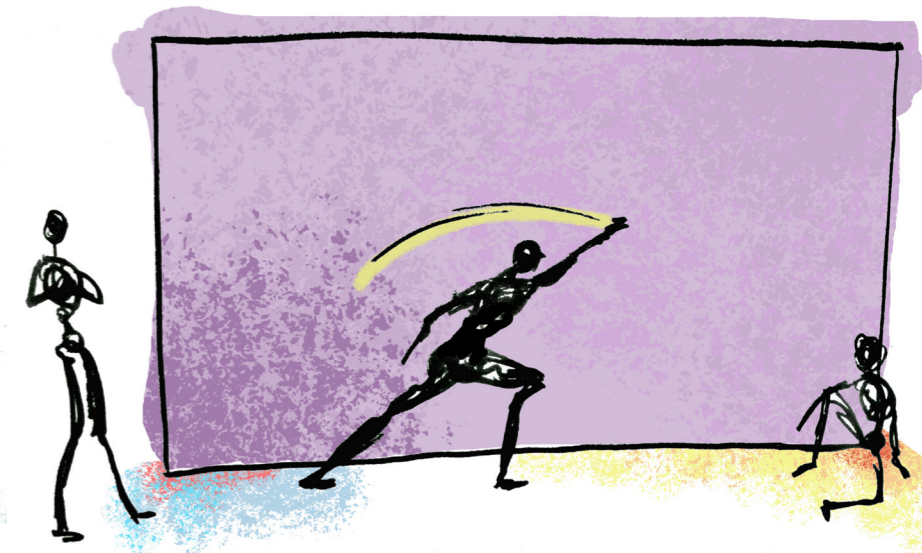
Section B-B' Scale 1:200



The various panels can have different shapes and sizes.

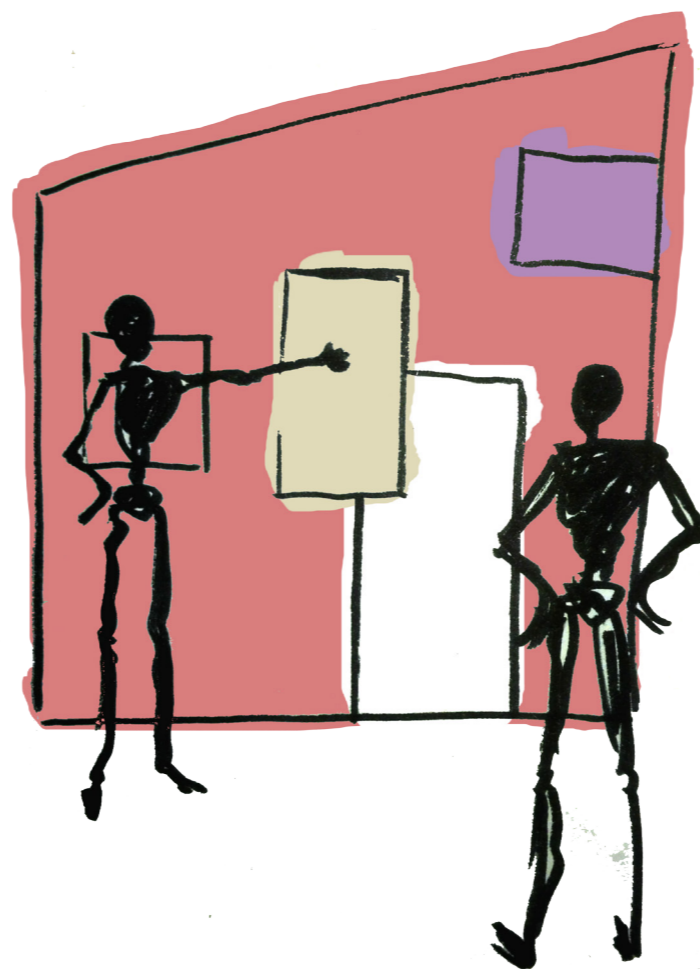
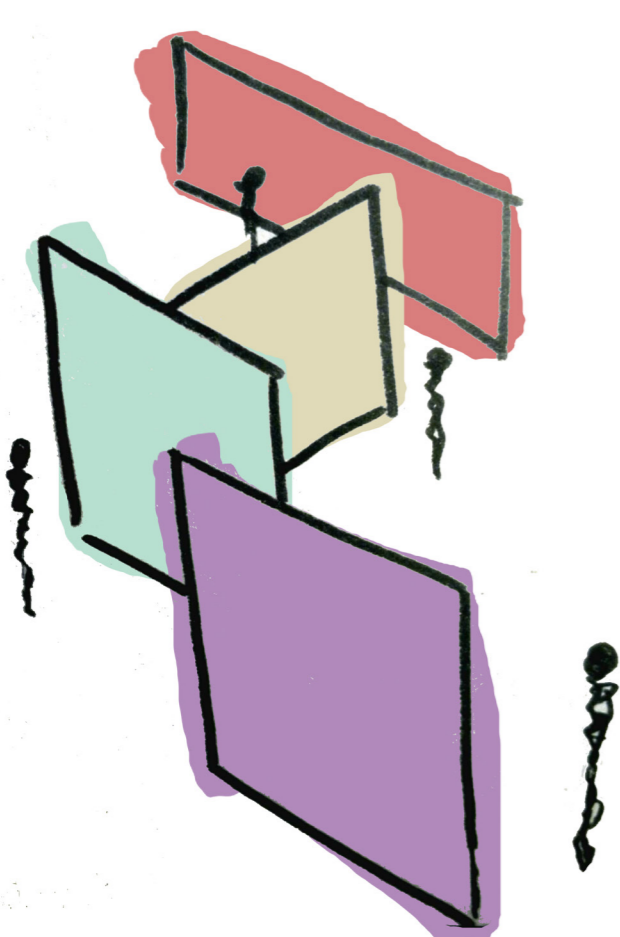


## SKETCHES OF THE PROJECT



The panels can be colored or painted by all people

The panels can be used as supports to display works of art by various artists in the city



There may also be the possibility of arranging the panels to your liking



PLANT OF THE PROJECT FIRST STRUCTURE

Scale 1:100



PLANT OF THE PROJECT SECOND STRUCTURE

Scale 1:100



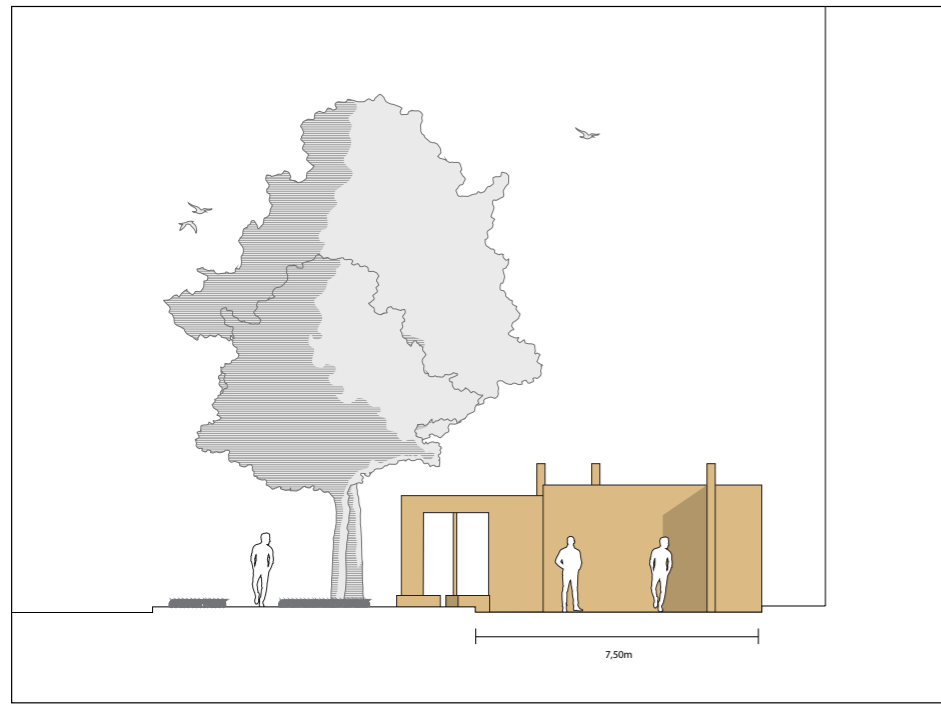
PLANT OF THE PROJECT THIRD STRUCTURE

Scale 1:100

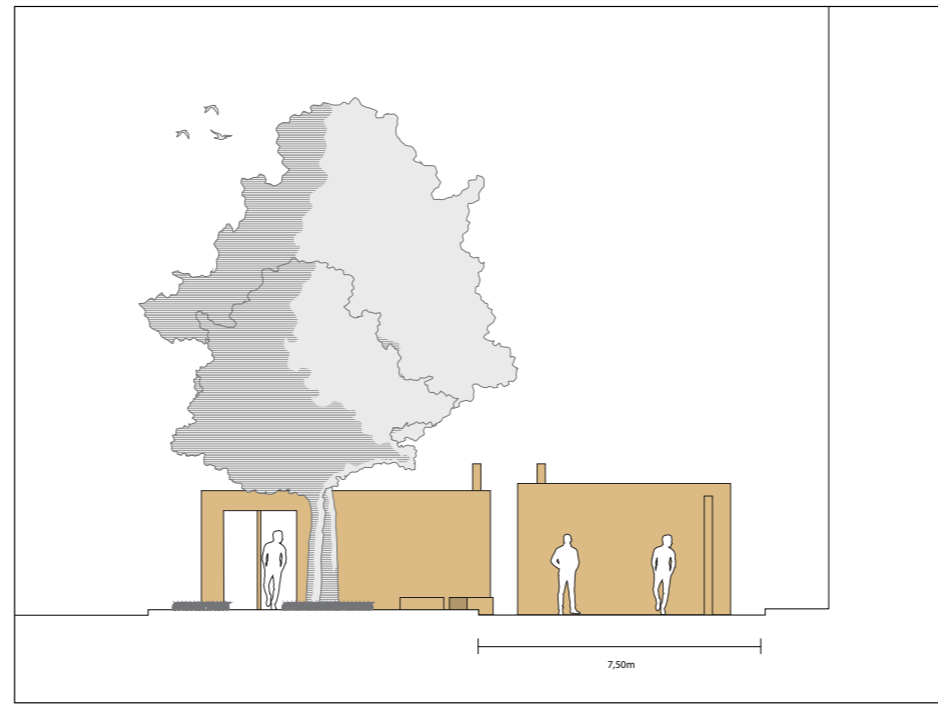




# SECTIONS OF THE PROJECT



Section A-A'-Scale 1:200



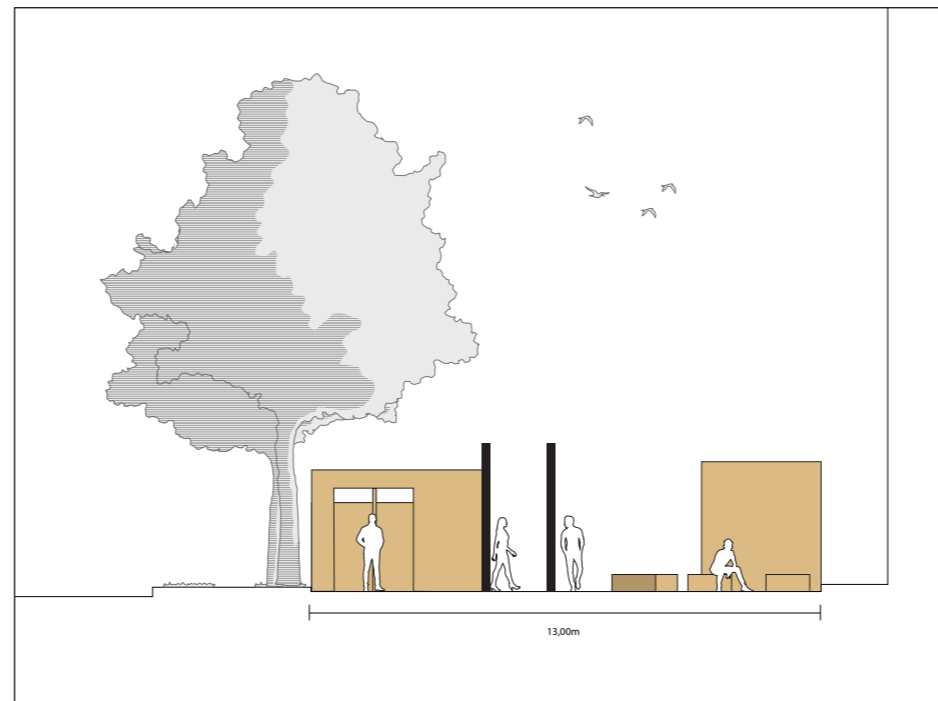
Section C-C'-Scale 1:200



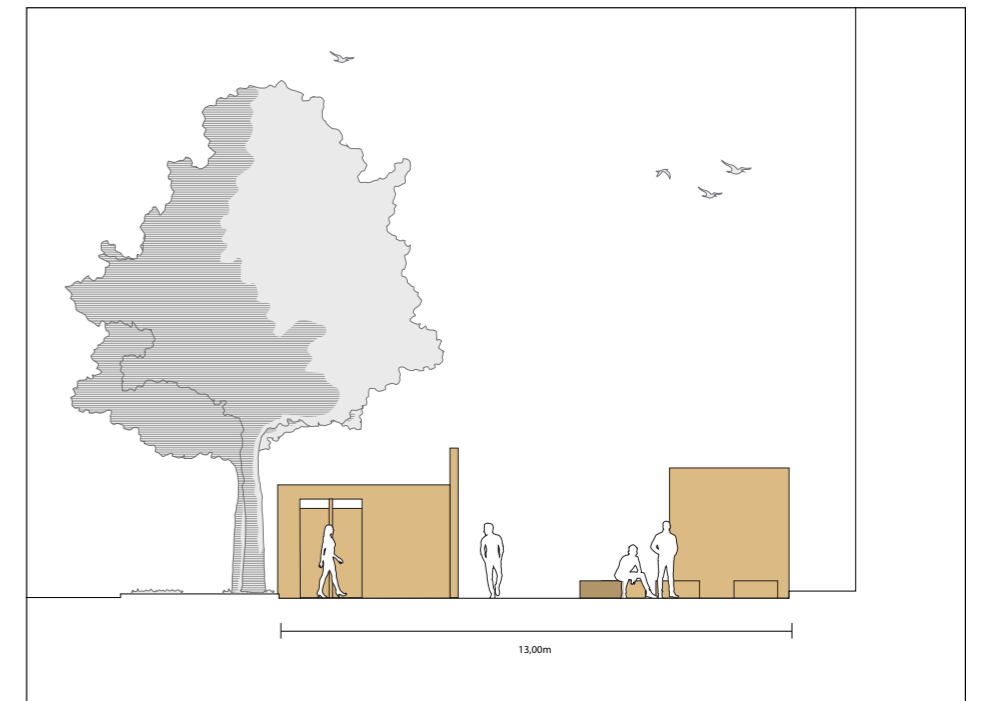
Section E-E'-Scale 1:200



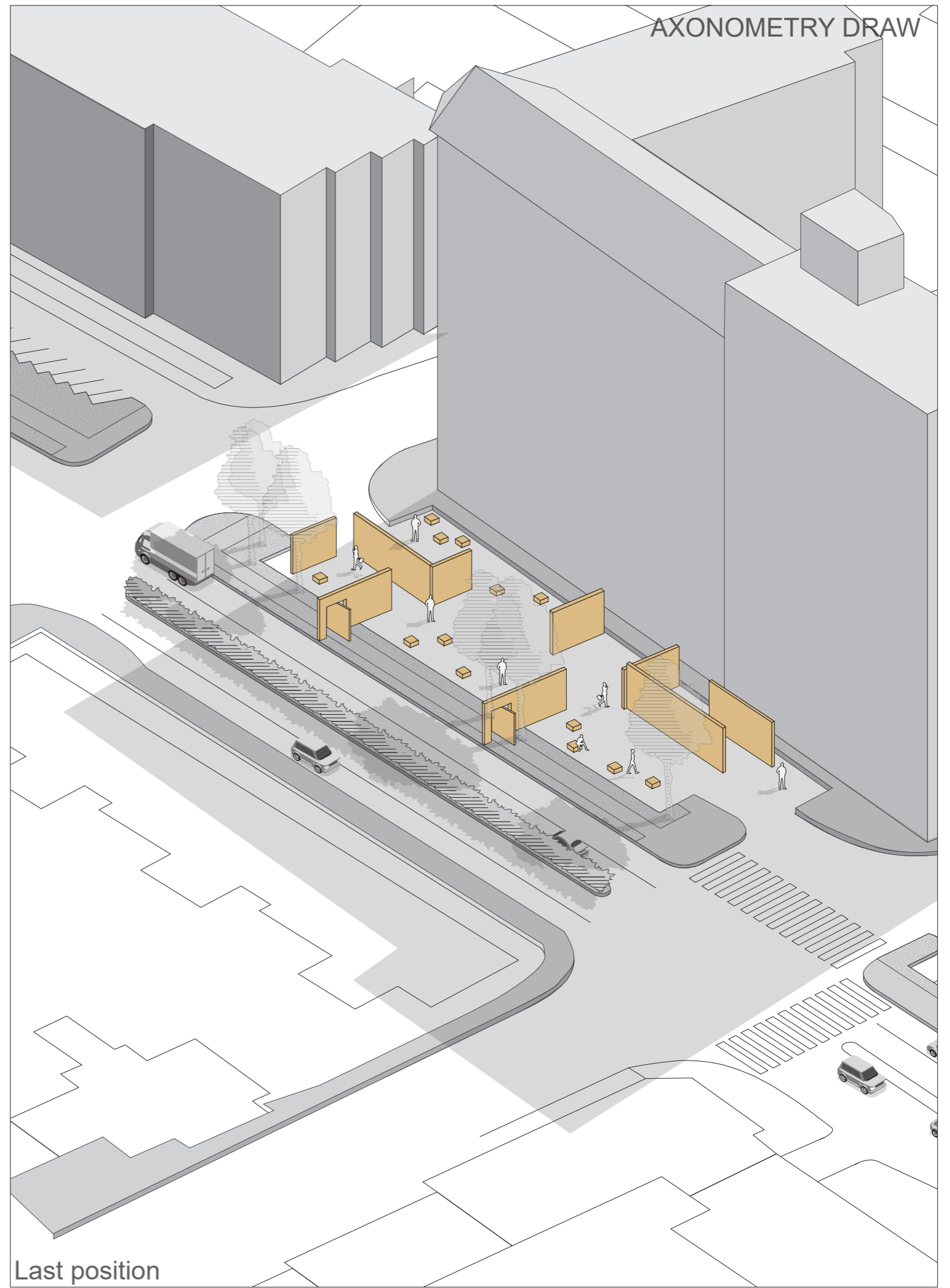
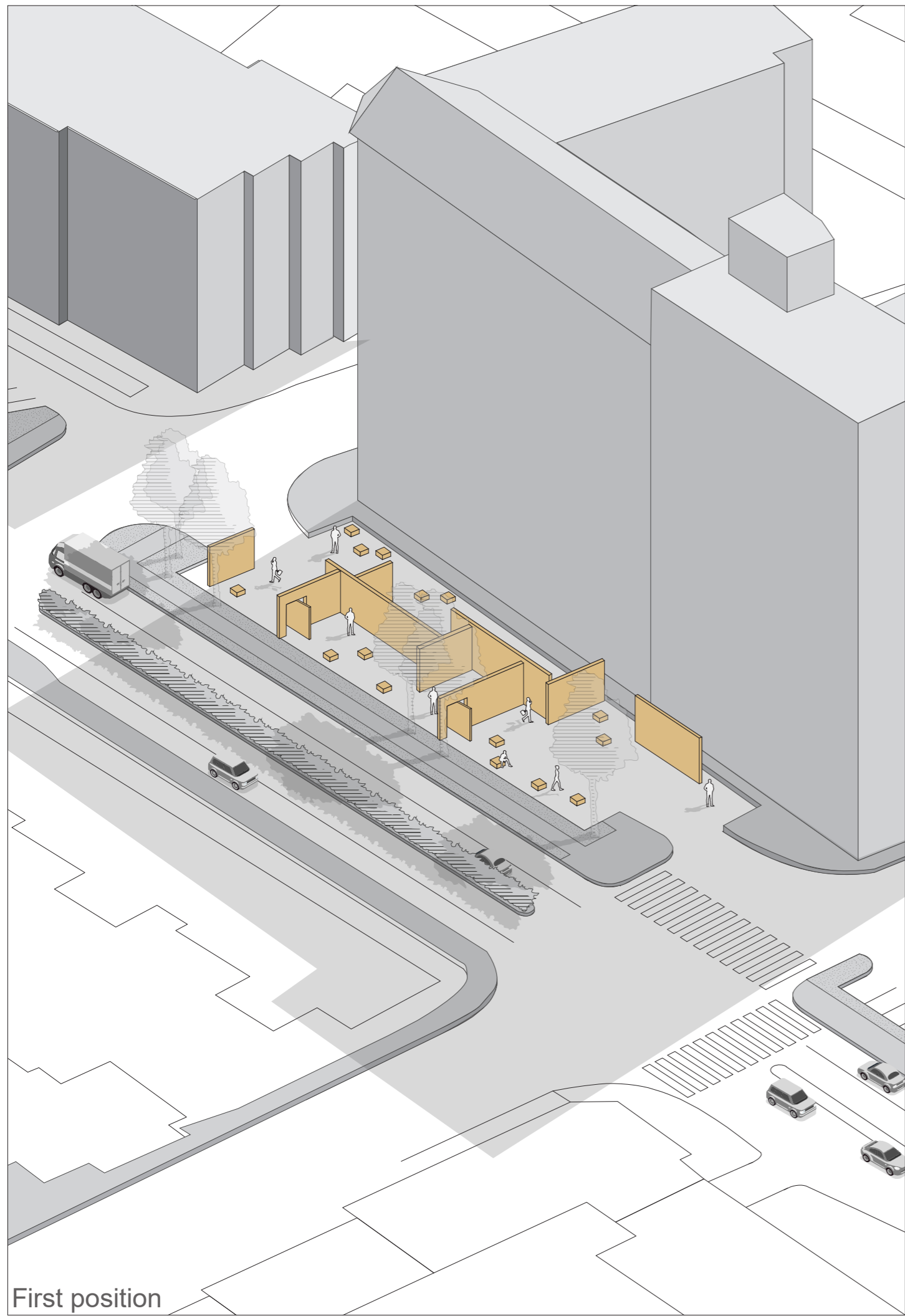
Section B-B'-Scale 1:200



Section D-D'-Scale 1:200

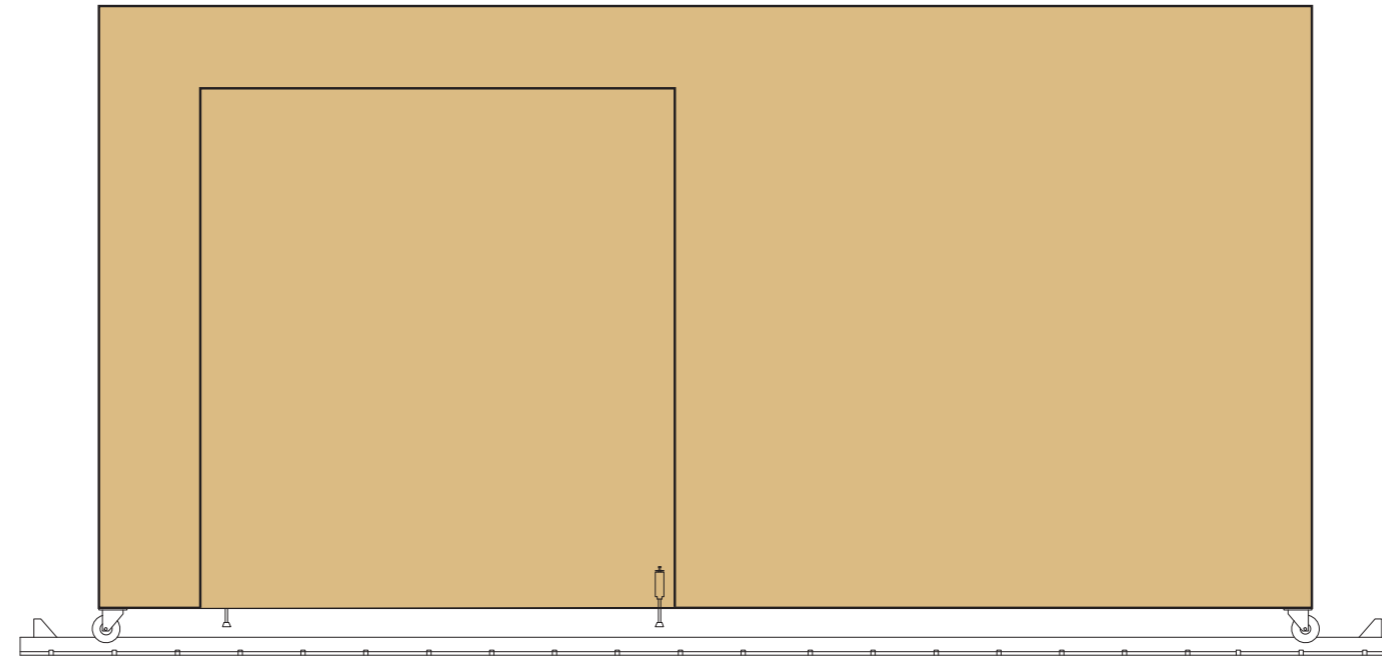
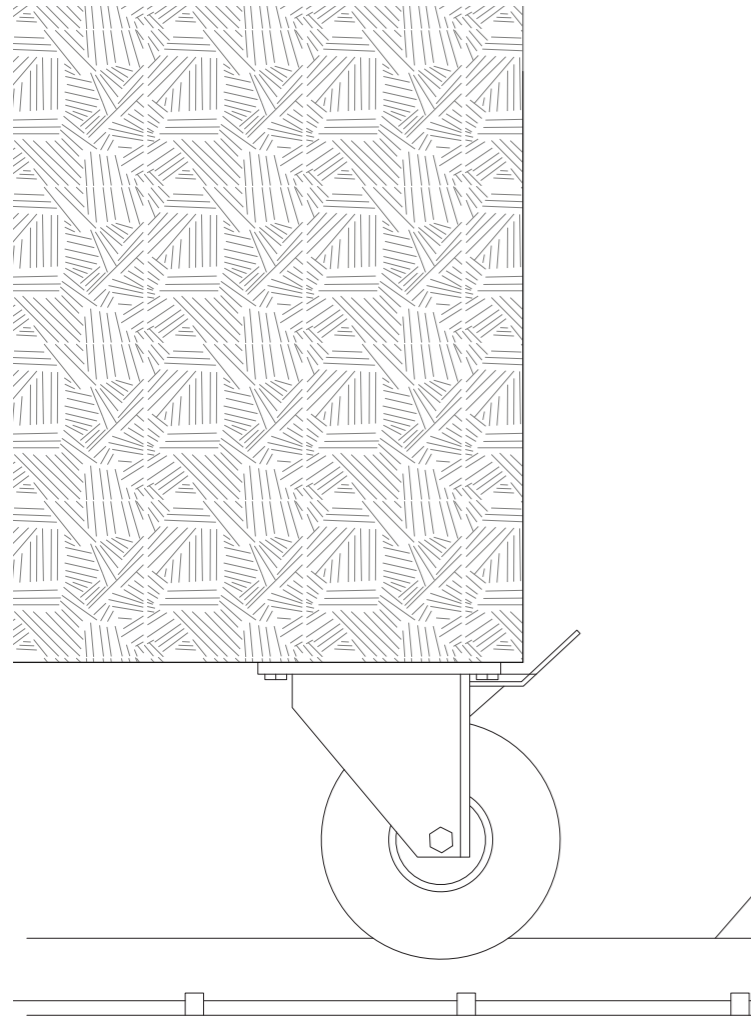


Section F-F'-Scale 1:200



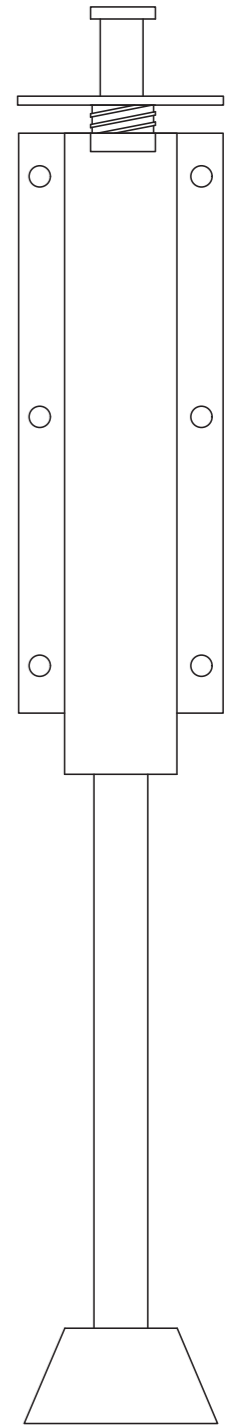
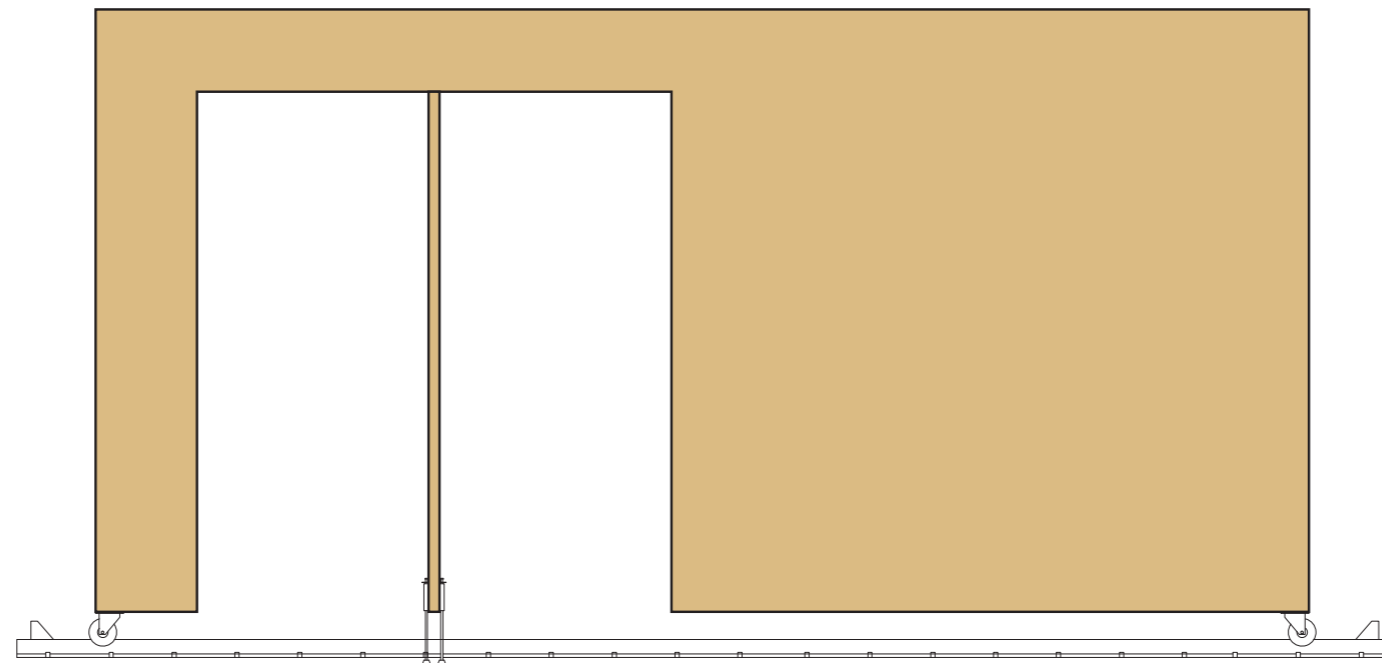
# DETAILS

There are small pistons to anchor the structure to the floor



The hole in the panel is closed when the structures are joined together and support themselves

When the structure opens it is possible to rotate the panel in order to resist the wind



# PROSPECTIVE DRAWS

