


**Madrid**

- ...a lemenő nap városa
- \_arccal a nap felé
- \_a lemenő nap városa
- \_átváltozások
- \_szünet
- \_évgyűrűk
- \_érhálózat
- \_időtengely
- \_találkozások




**Intro**



Mağrîj (AFI [madɾiˈɾi])  
Magerîit [madɟeˈɾiit] Matrice Matrich

**Intro**

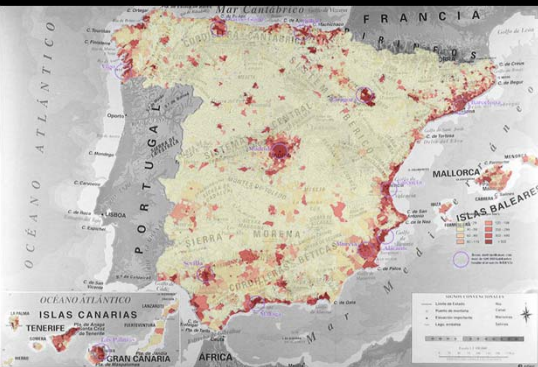


**Intro**

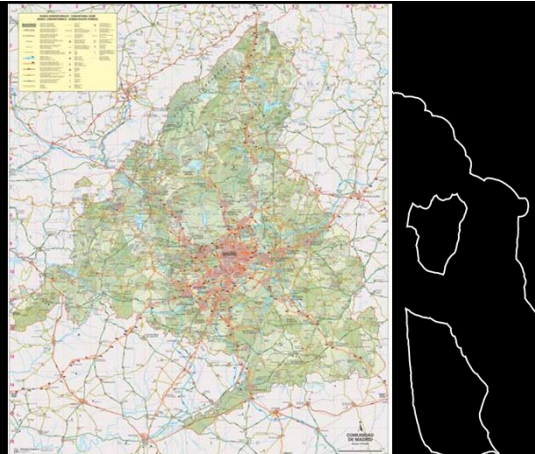


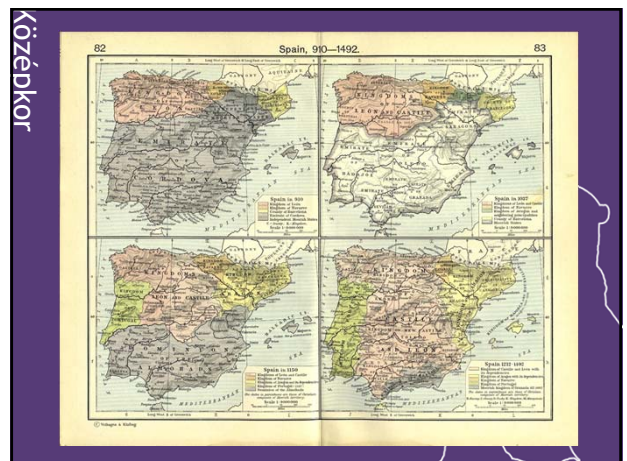
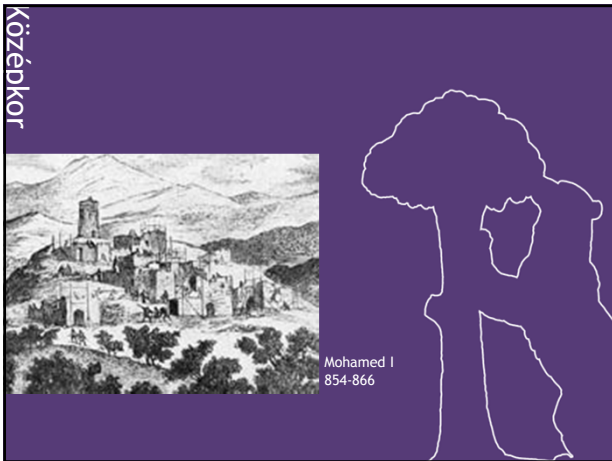
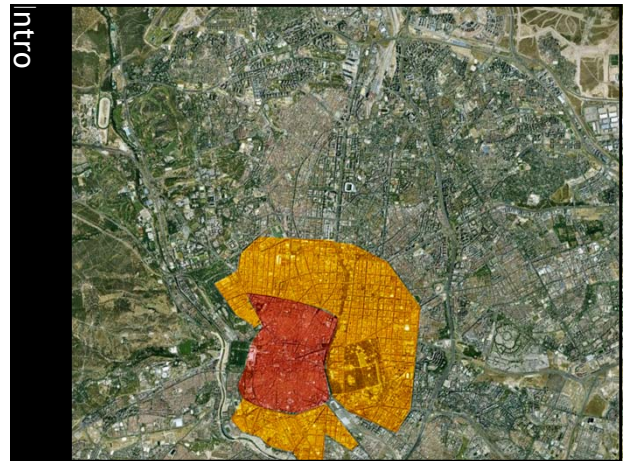
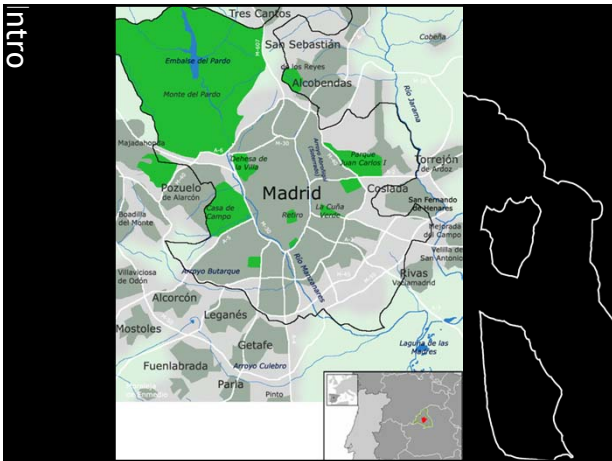
IBERIA ACCORDING TO SPANIARDS

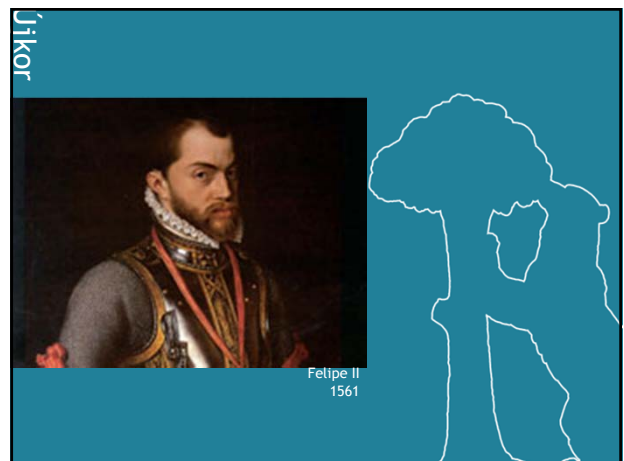
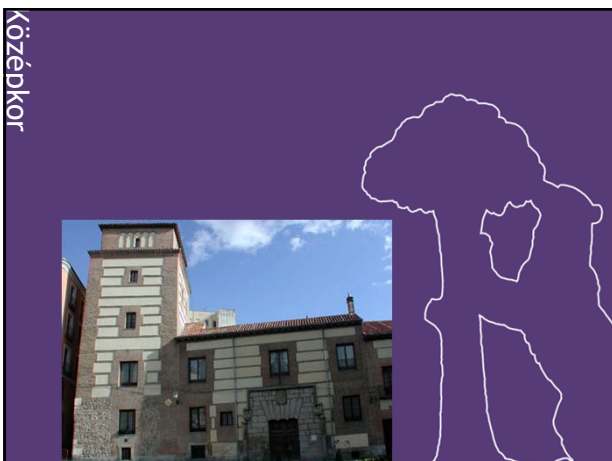
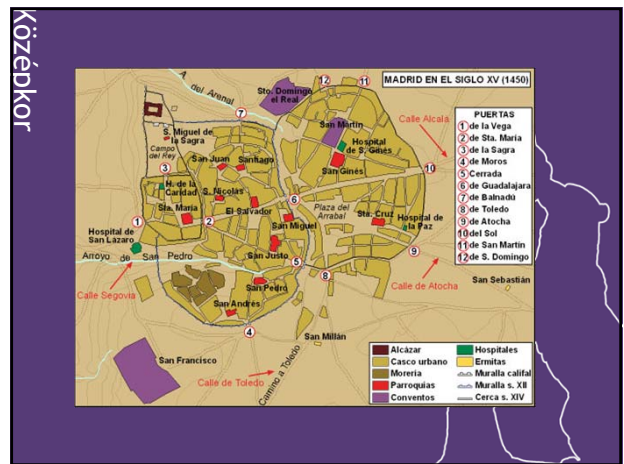
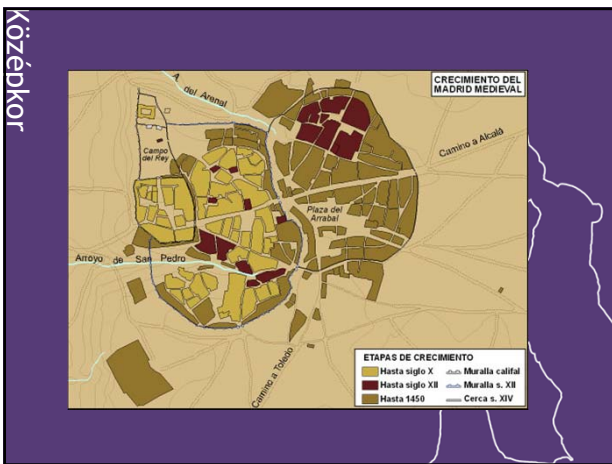
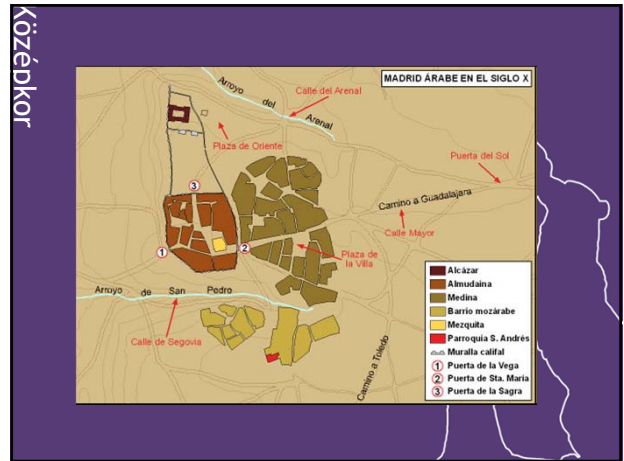
**Intro**

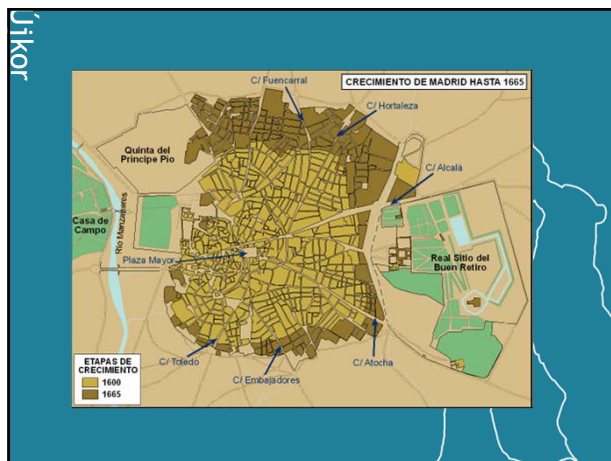
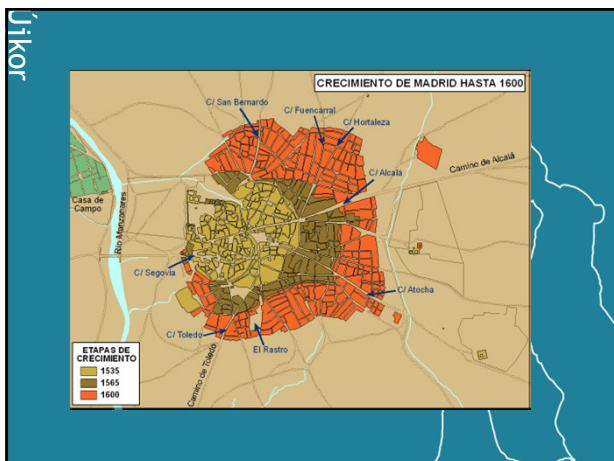
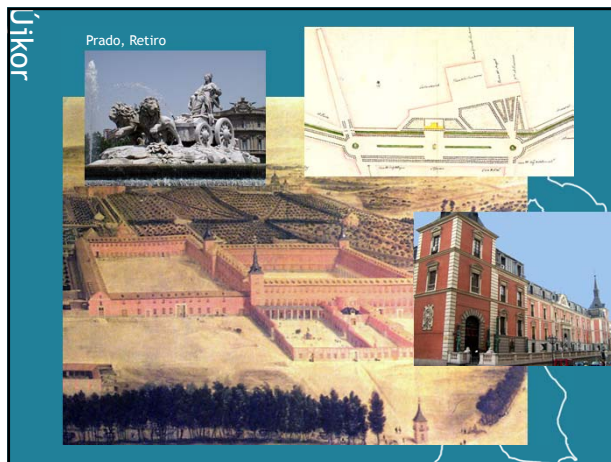
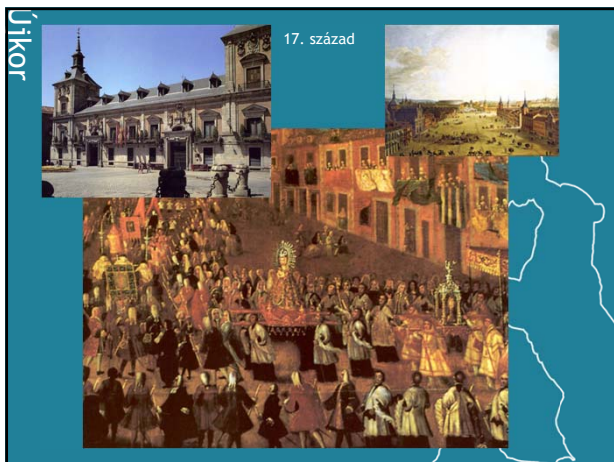
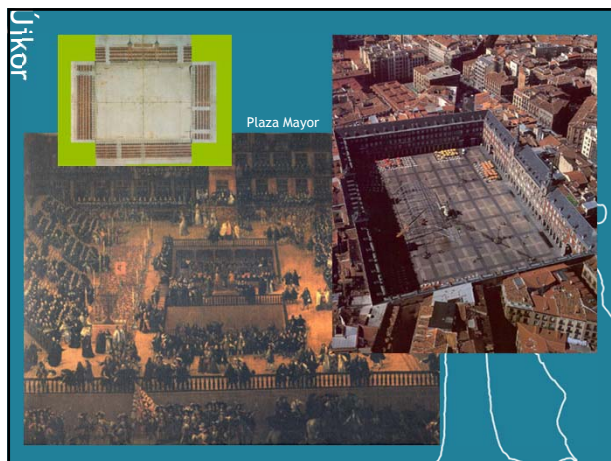
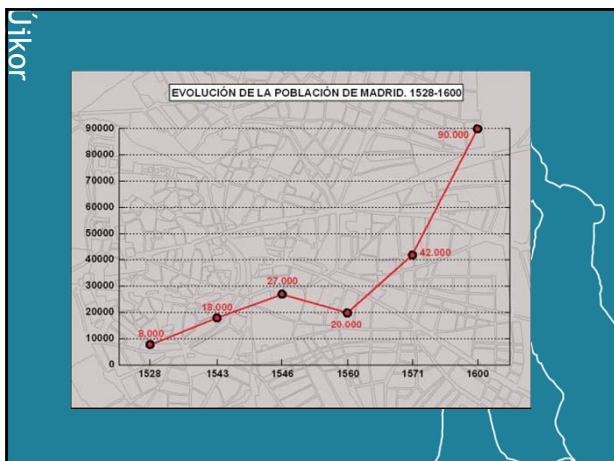


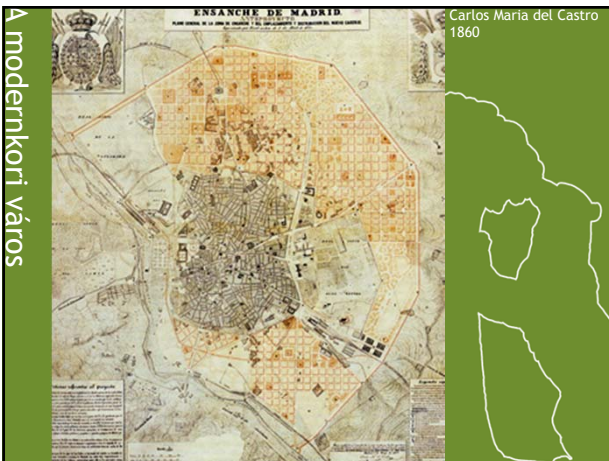
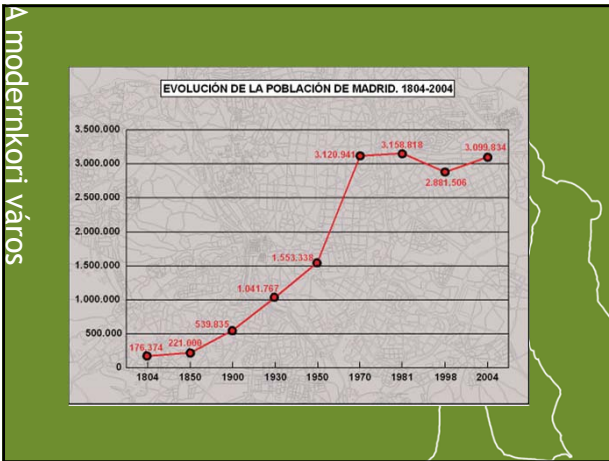
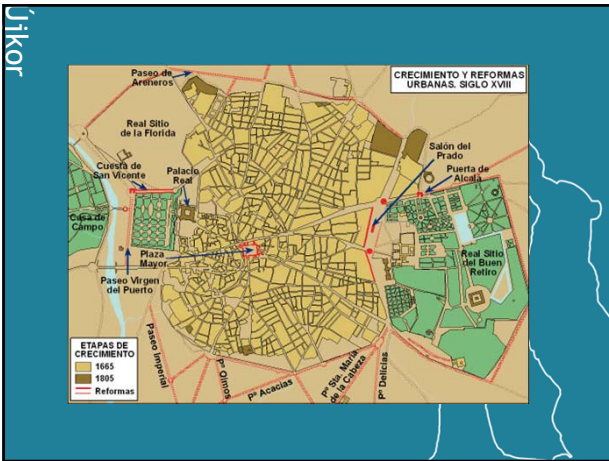
**Intro**

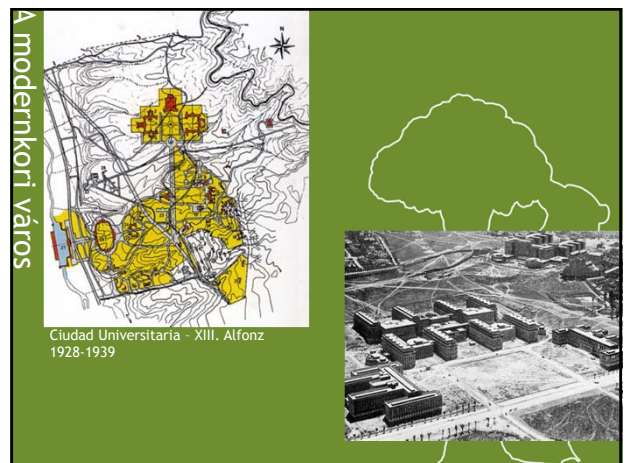
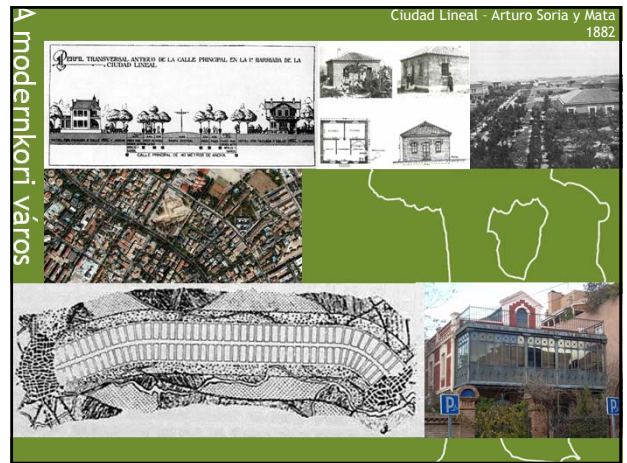
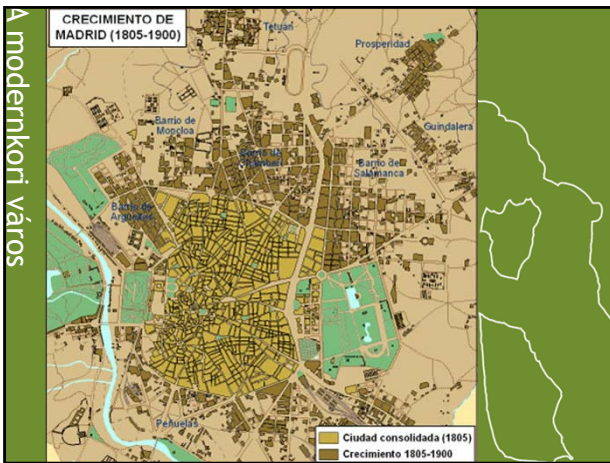


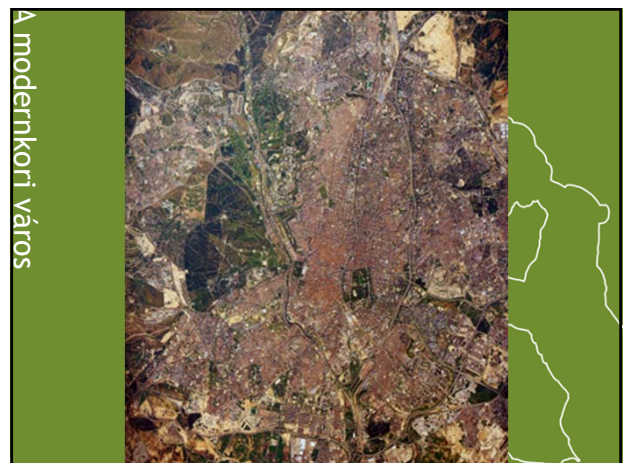
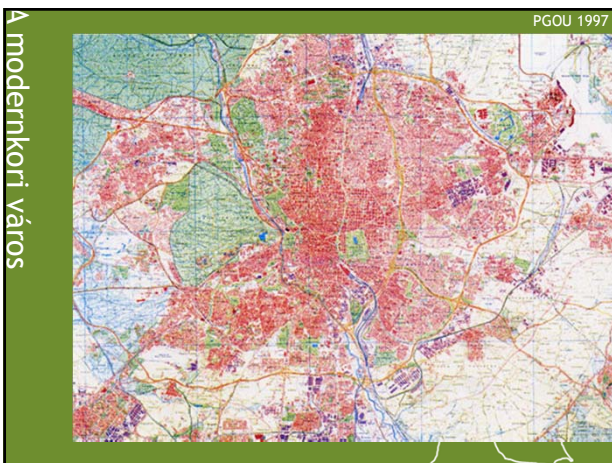
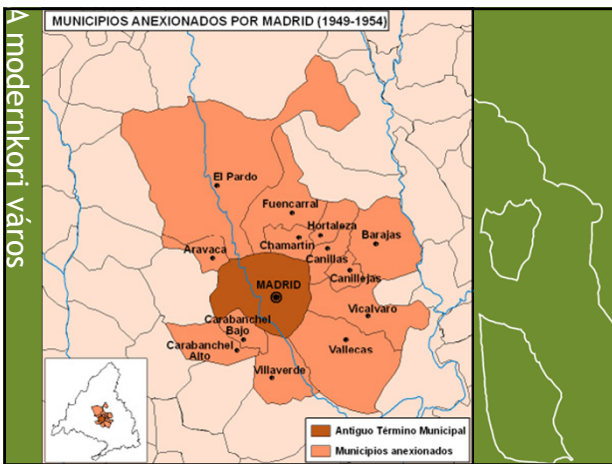
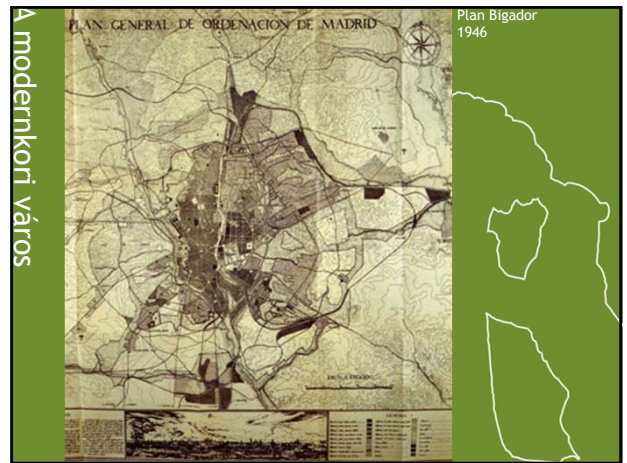
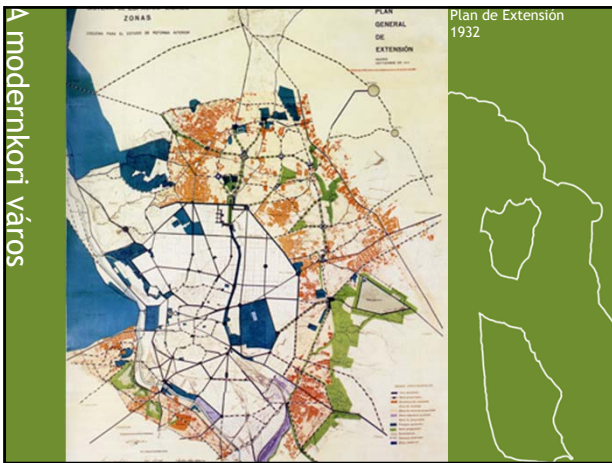




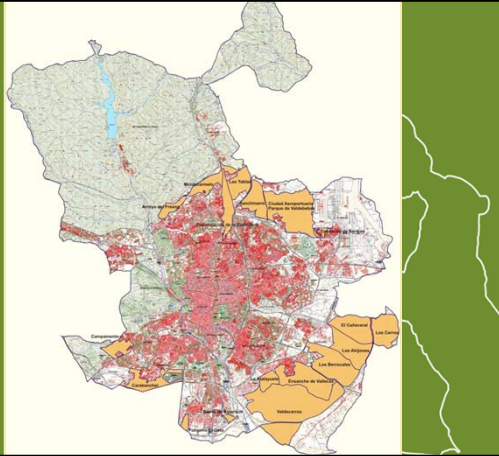




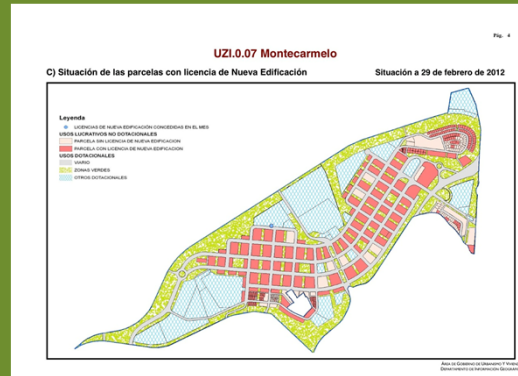




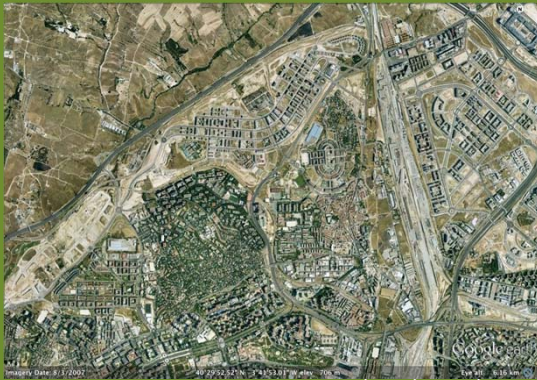
A modernkori város



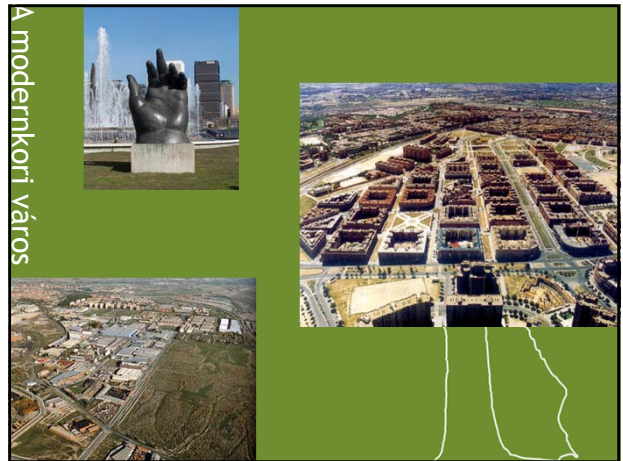
A modernkori város



A modernkori város



A modernkori város



Alvóvárosok



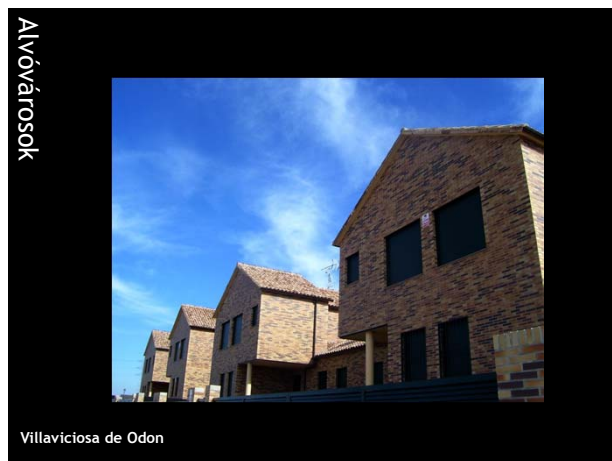
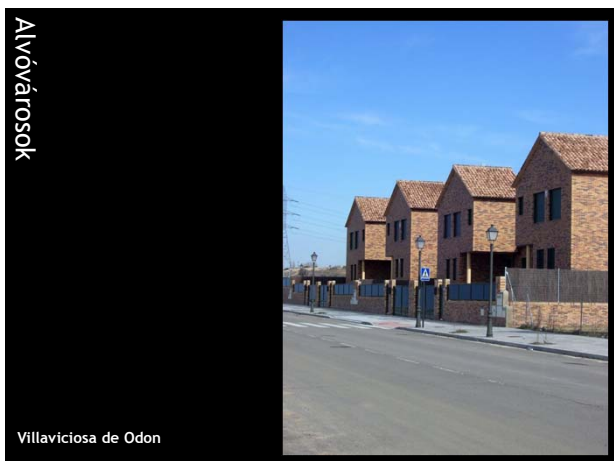
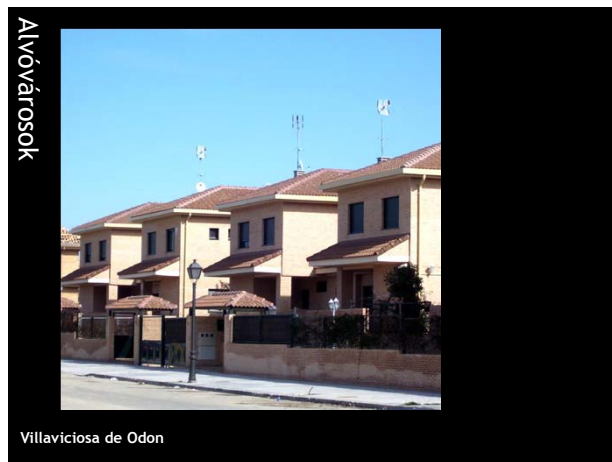
Villaviciosa de Odon

Alvóvárosok



Villaviciosa de Odon







Szociális lakásépítés



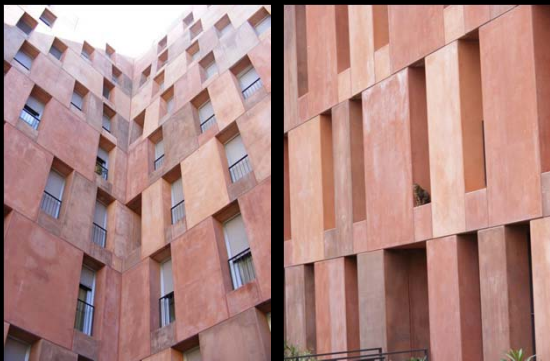
Villaverde szociális lakások, 2005  
David Chipperfield

Szociális lakásépítés



Villaverde szociális lakások, 2005  
David Chipperfield

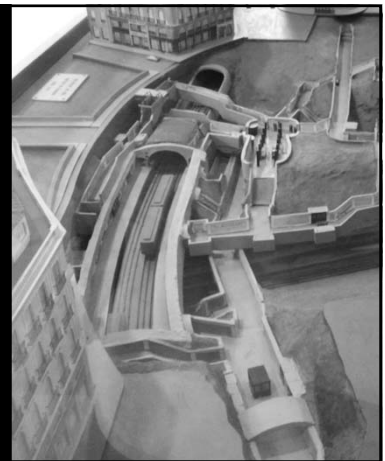
Szociális lakásépítés



Villaverde szociális lakások, 2005  
David Chipperfield

Madrid

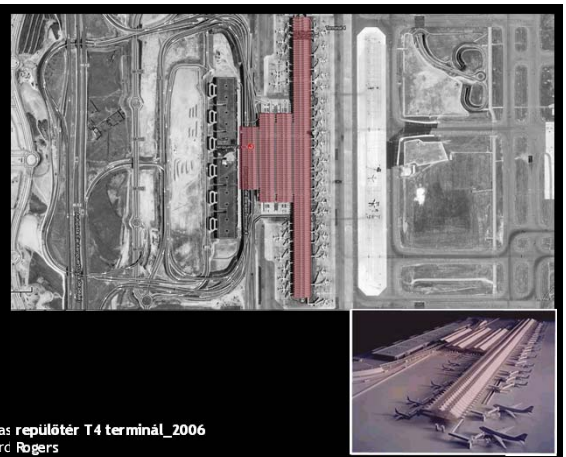
- ...a lemenő nap városa
- \_arccal a nap felé
- \_a lemenő nap városa
- \_átváltozások
- szünet
- \_égyűrűk
- \_érhálózat
- \_időtengely
- \_találkozások



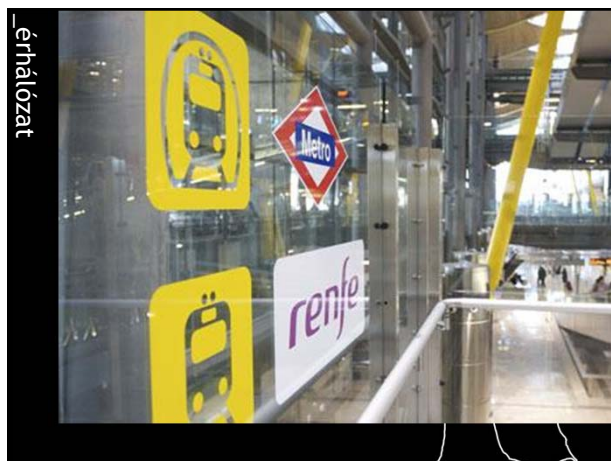
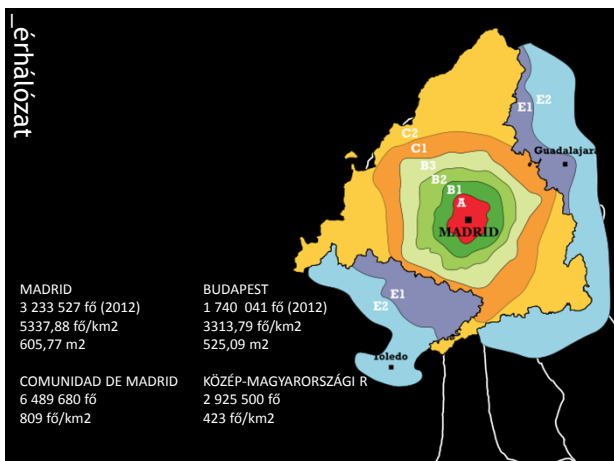
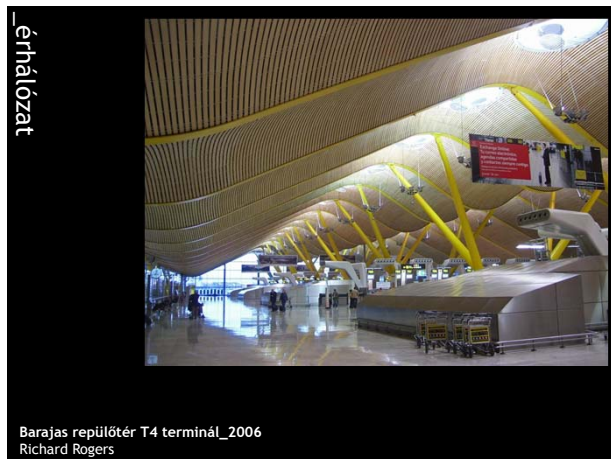
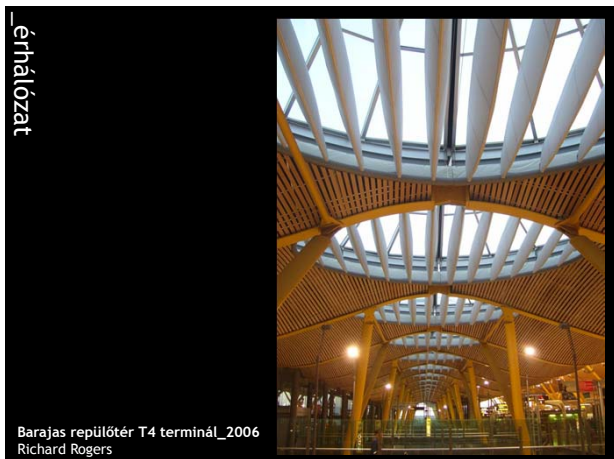
\_érhálózat

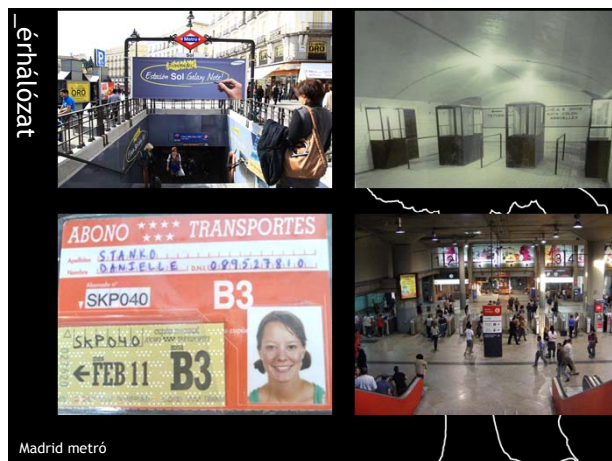
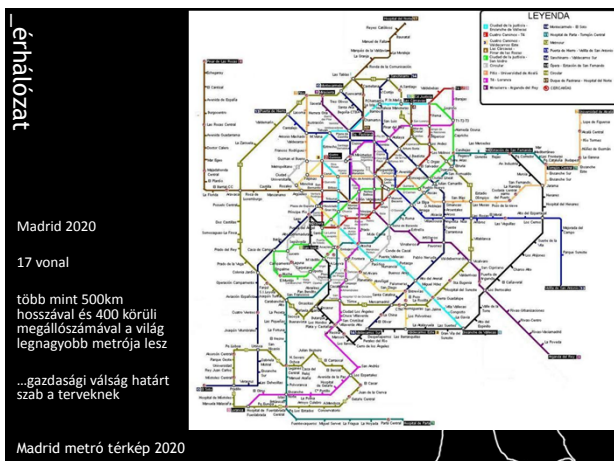
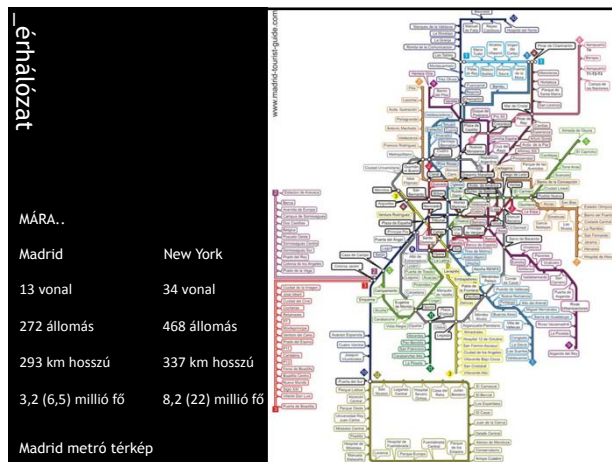
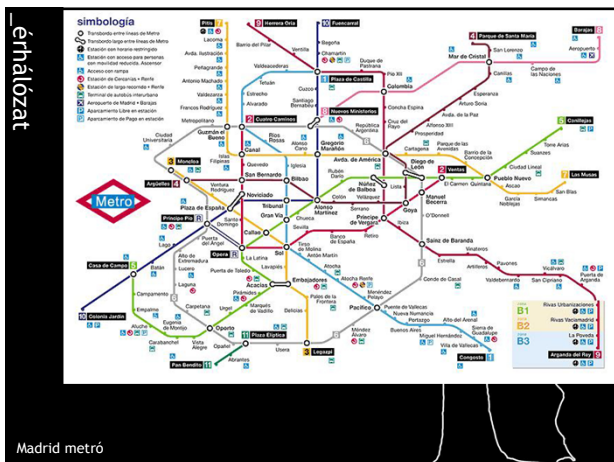
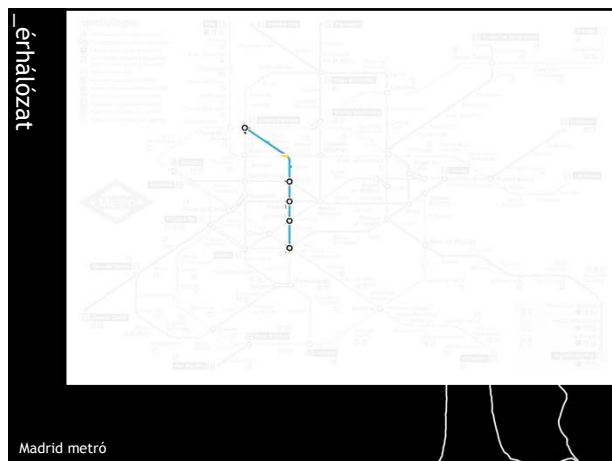


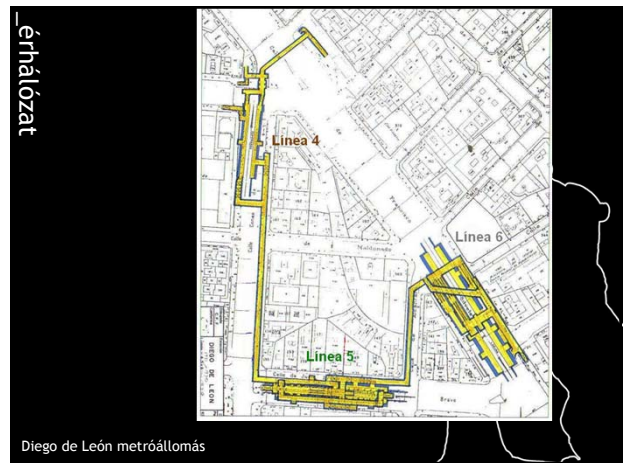
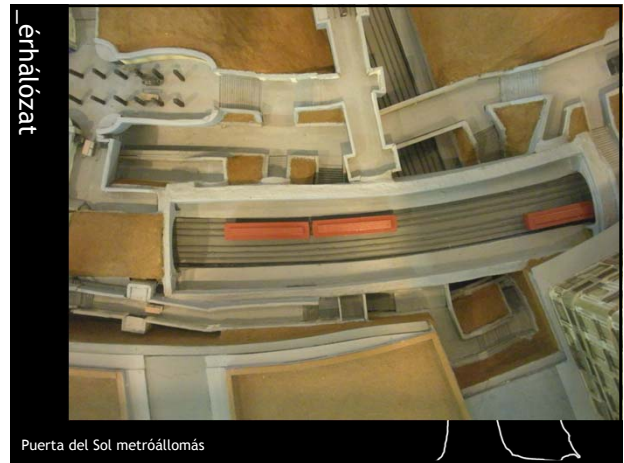
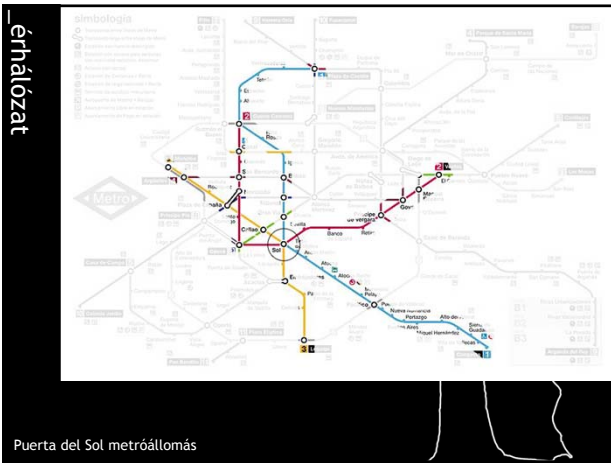
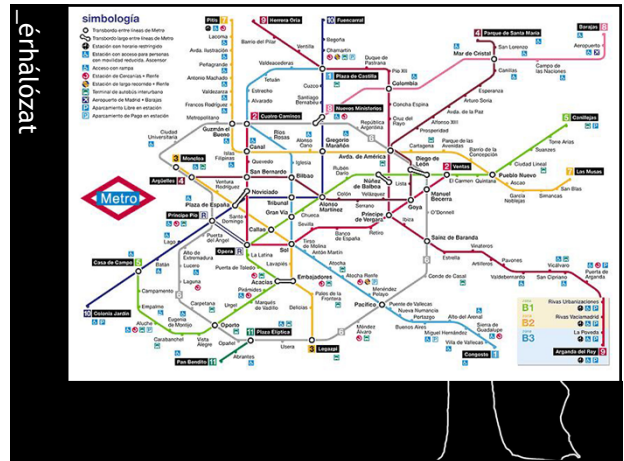
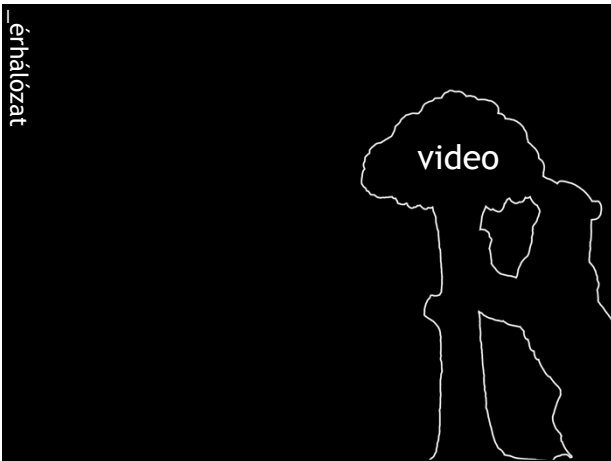
\_érhálózat

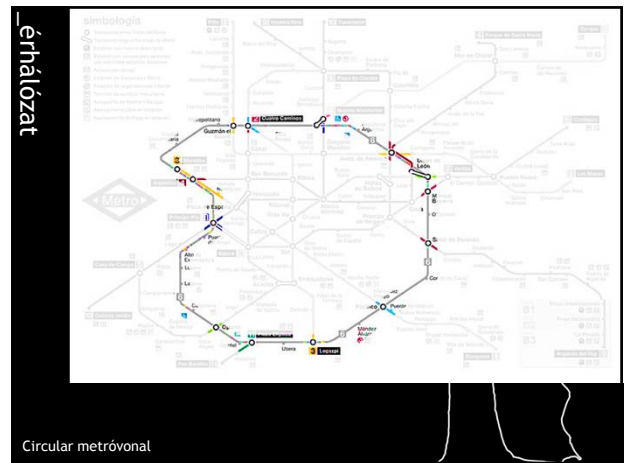
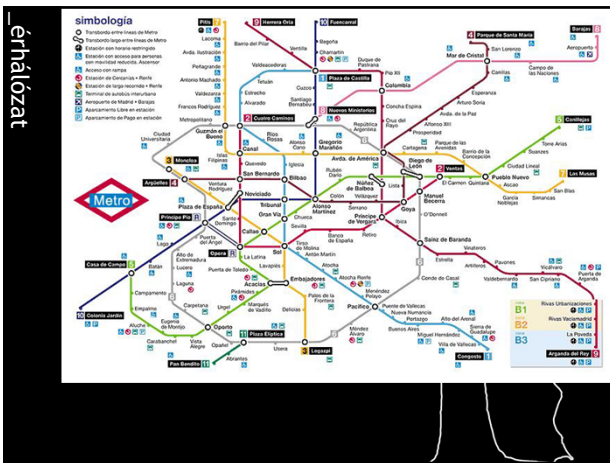


Barajas repülőtér T4 terminál\_2006  
Richard Rogers









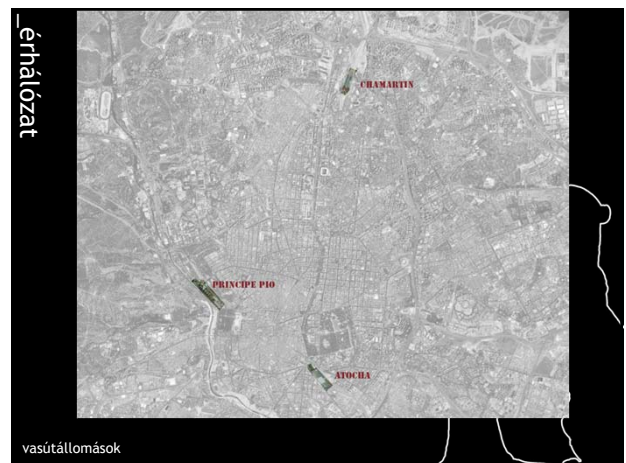
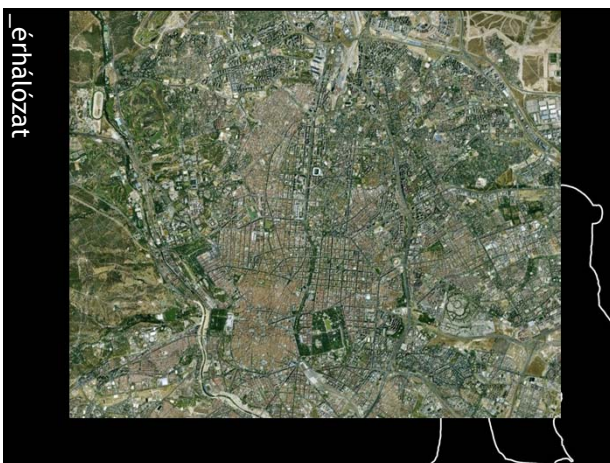
Circular metróvonal



Bibliometro - Paredes & Pedrosa



Bibliometro - Paredes & Pedrosa



vasútállomások

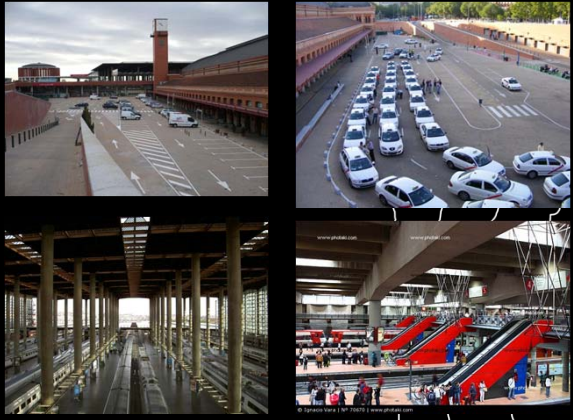
**érhálózat**



Atocha pályaudvar  
 1892-ben egy tűzvész után épül újra  
 Rafael Moneo tervezi a bővítést  
 Vonatok kikerülnek a csarnoktéből  
 Legfontosabb intermodális csomópont


Atocha pályaudvar

**érhálózat**



Atocha pályaudvar

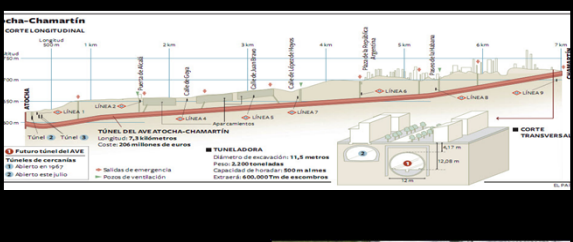
**érhálózat**



AVE - Alta Velocidad Española - RENFE az üzemeltető  
 A teljes hálózat hossza 2056 km  
 Első vonal Madrid-Sevilla (1992 Expo), 471 m 2,5 óra utazási idő  
 Madrid - Valladolid (2007) 42,1 km hosszan alagút a 180 km-ből  
 2,5 óras útból 56 perces út

AVE - Alta Velocidad Española

**érhálózat**



AVE vonal hiánya Atocha - Chamartín  
 Két állomást összekötő alagút  
 7317 méter hosszú  
 2 cernacia és 8 metróvonal keresztezés

2007-2013 között

AVE - Alta Velocidad Española

**érhálózat**




AVE vonal hiánya Atocha - Chamartín  
 Két állomást összekötő alagút  
 7317 méter hosszú  
 2 cernacia és 8 metróvonal keresztezés

2007-2013 között

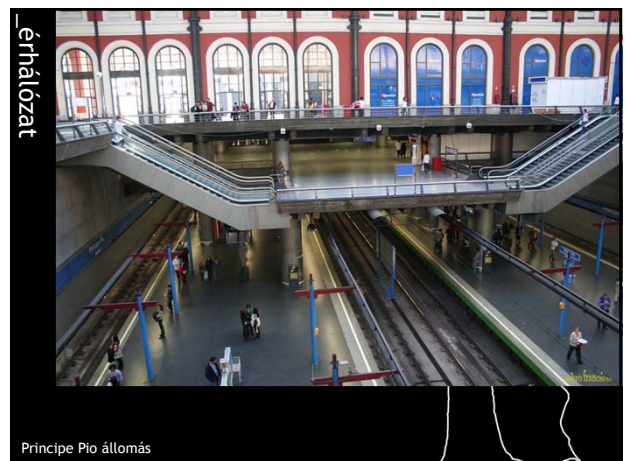
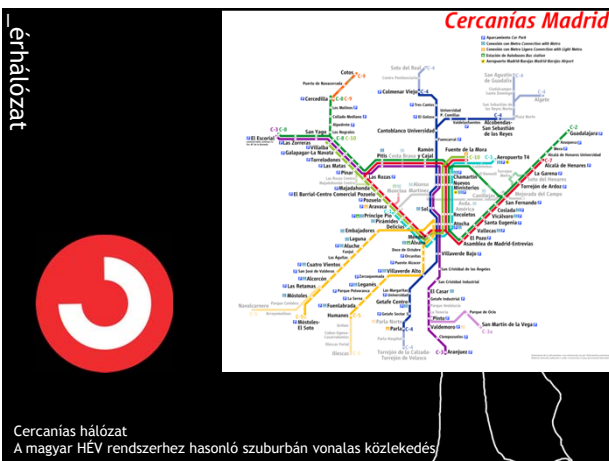
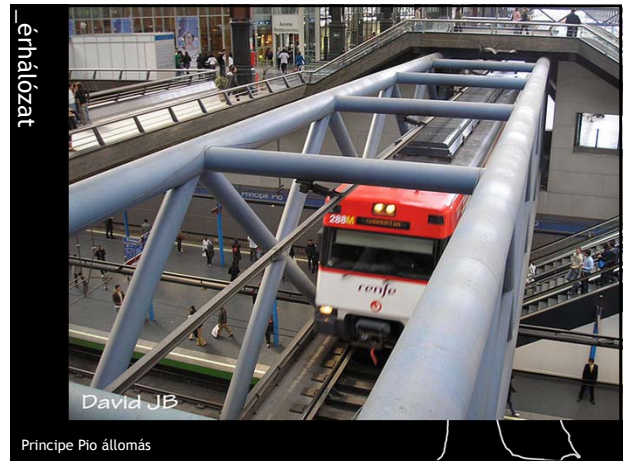
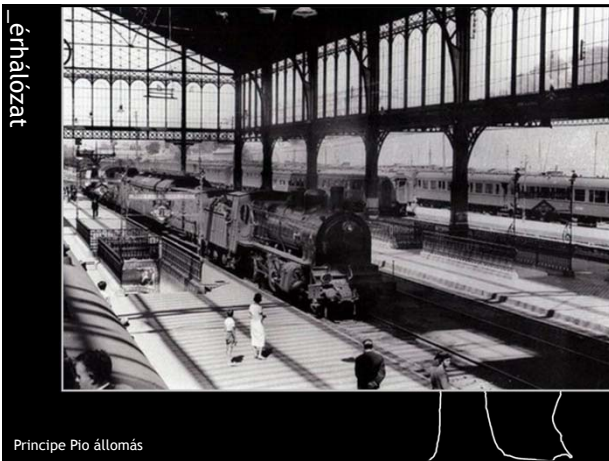
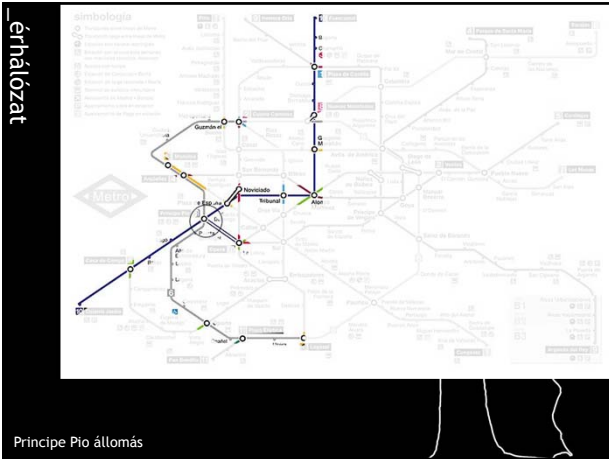
AVE - Alta Velocidad Española

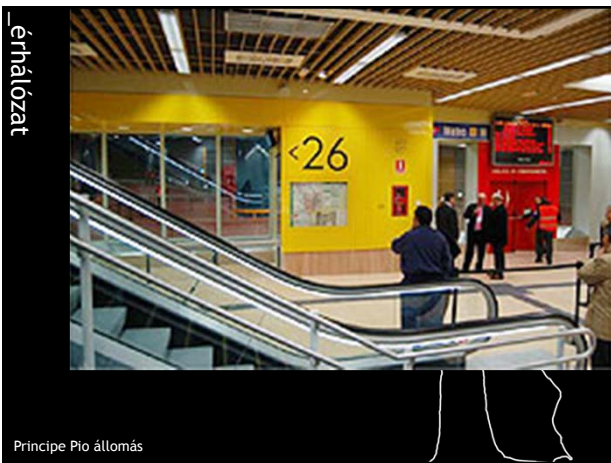
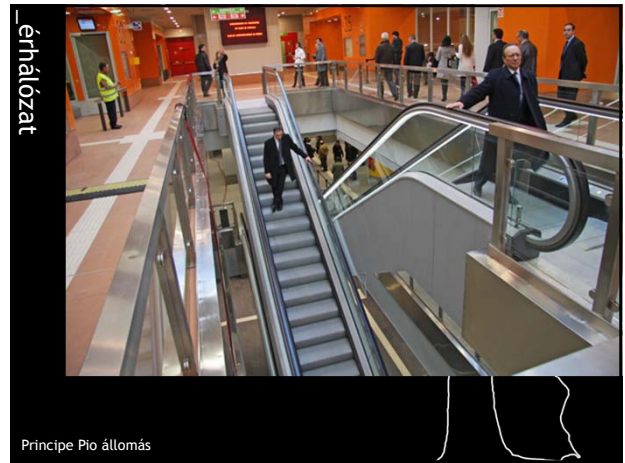
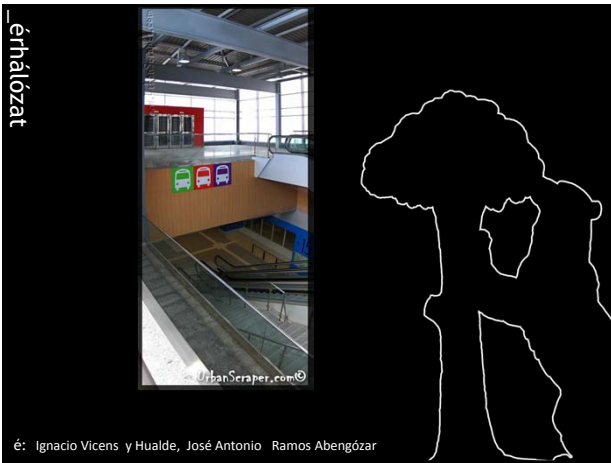
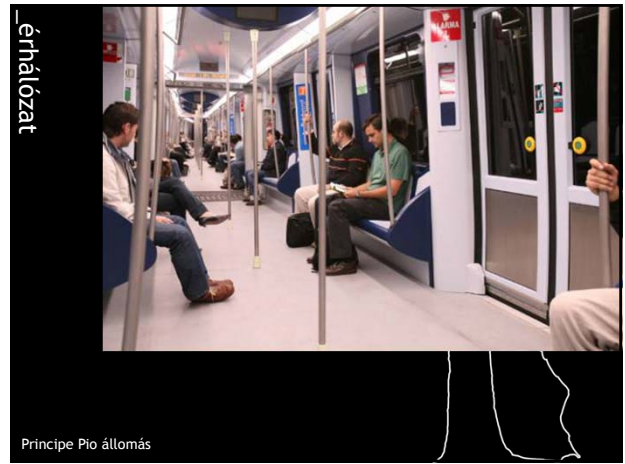
**érhálózat**

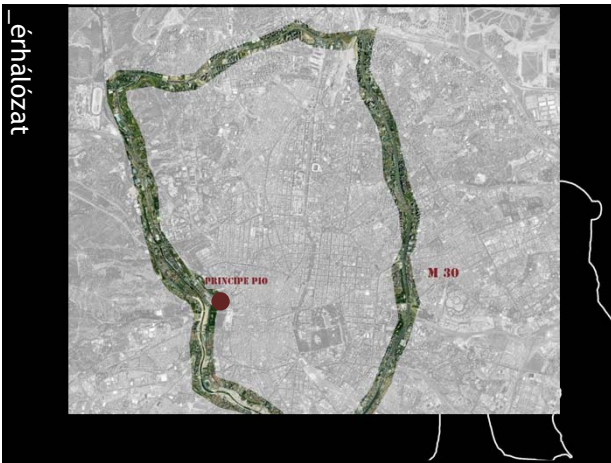
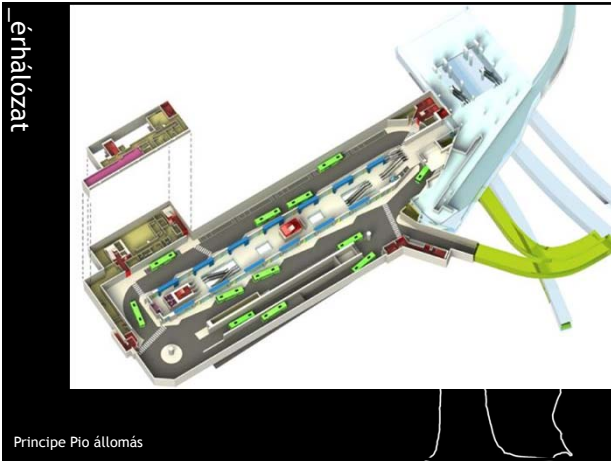


Madrid metró









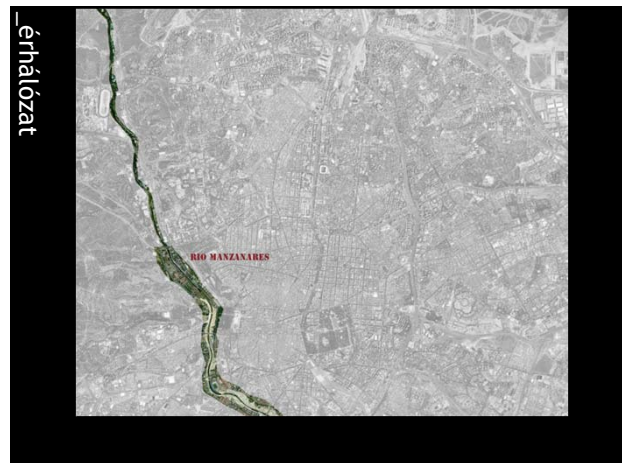
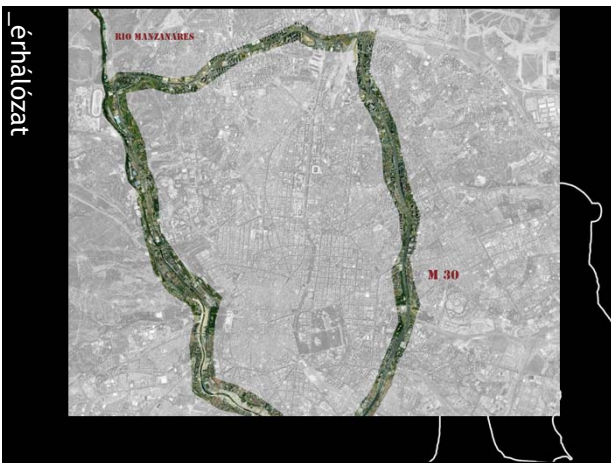
\_érhálózat

M30 autópálya

Spanyolország legforgalmasabb autópályája  
300 000 autó naponta (M0 66 000)

32,5 km hosszú elkerülő körgyűrű

Európa leghosszabb városi közúti alagútja 10 km hosszú  
3-6 sáv



**\_érhálózat**




az autópálya és a folyó közös szakaszán Autópálya forgalma alagutakban vezetve

649 hektár megújított terület  
7 millió m2 ebből 2 millió m2 park

25000 új fa

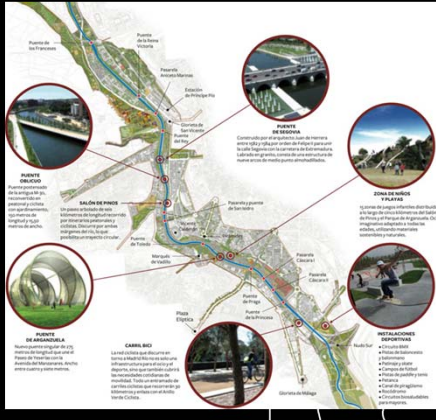
Casa de Campo-t összeköti ezzel a lineáris parkkal a város többi zöld felületeivel

a teljes projekt 370 millió euro




Rio Manzanares, West8, Rubio &Álvarez-Sala, Burgos&Garrido, Porras & La Gasta

**\_érhálózat**




Rio Manzanares, West8, Rubio &Álvarez-Sala, Burgos&Garrido, Porras & La Gasta

**\_érhálózat**



Rio Manzanares, West8, Rubio &Álvarez-Sala, Burgos&Garrido, Porras & La Gasta

**\_érhálózat**




Rio Manzanares, West8, Rubio &Álvarez-Sala, Burgos&Garrido, Porras & La Gasta

**\_érhálózat**

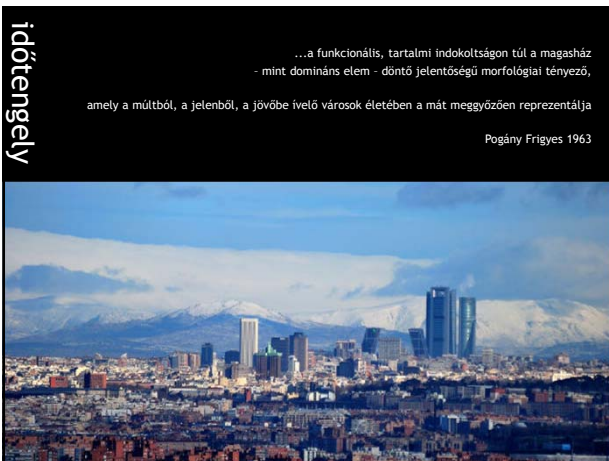
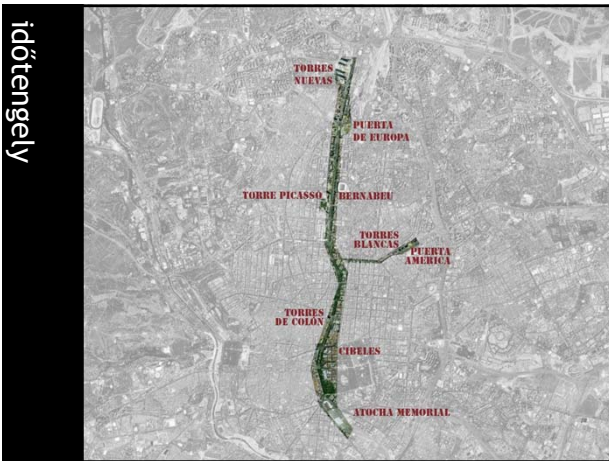
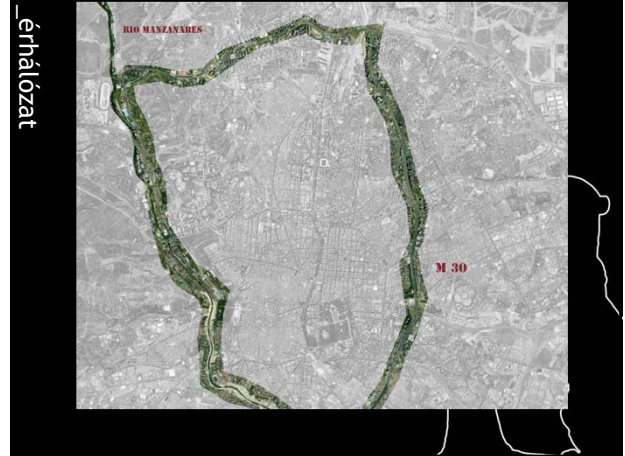


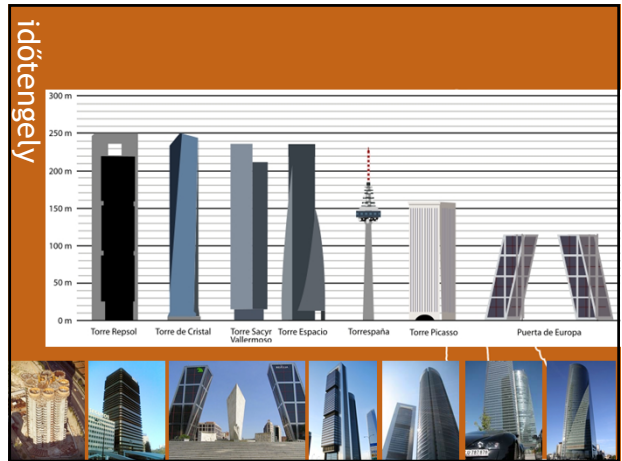
Rio Manzanares, West8, Rubio &Álvarez-Sala, Burgos&Garrido, Porras & La Gasta

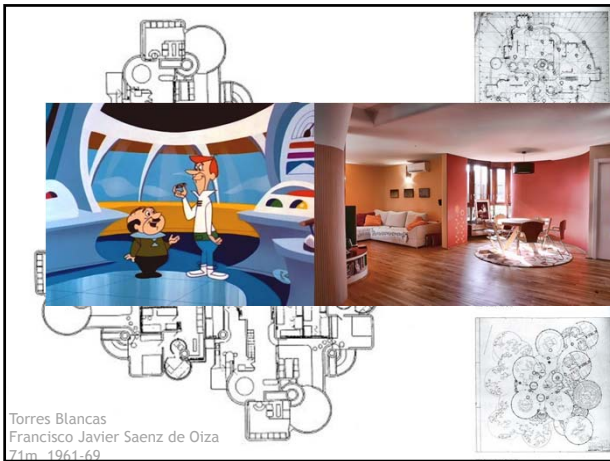
**\_érhálózat**



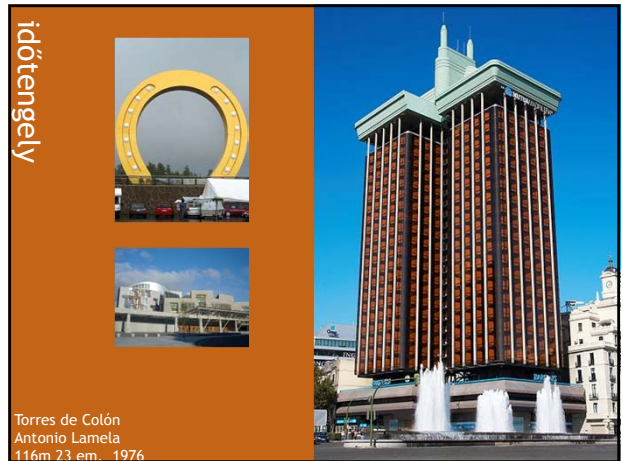
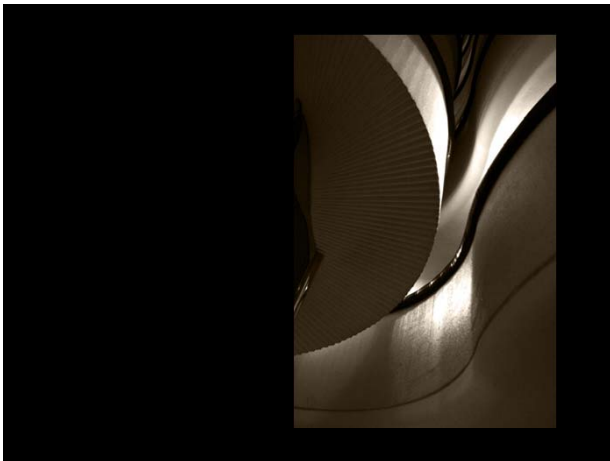
Rio Manzanares, West8, Rubio &Álvarez-Sala, Burgos&Garrido, Porras & La Gasta







Torres Blancas  
Francisco Javier Saenz de Oiza  
71m - 1961-69



Torres de Colón  
Antonio Lamela  
116m 23 em. 1976



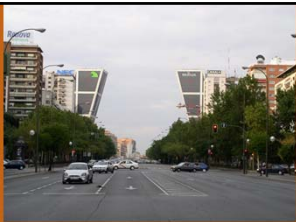
Torre Picasso  
Minoru Yamasaki  
157m 47 em. (1974) 1988

ETA 2002 - 1700kg



Puerta De Europa  
Philip Johnson  
114m 26 em. 1989-96

időtengely



Paseo de la Castellana



Puerta De Europa  
Philip Johnson  
114m 26 em. 1989-96


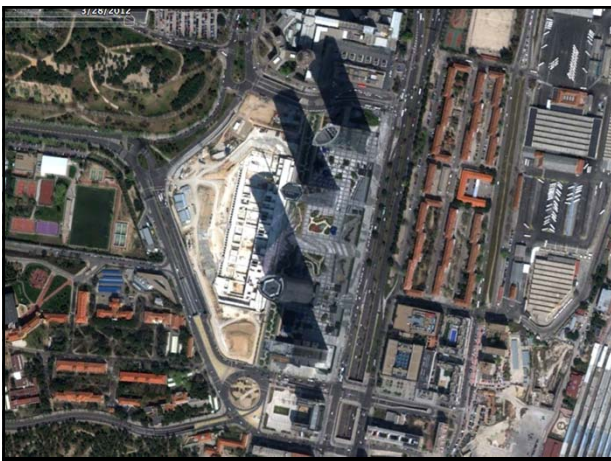
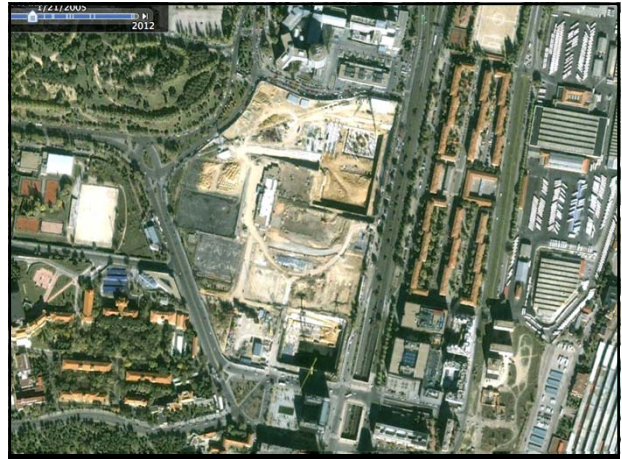
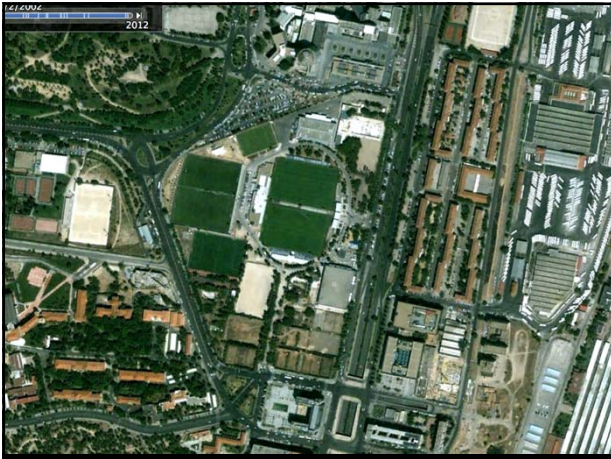


Torre Caja Madrid  
Foster and Partners  
250m 45 em. 2009

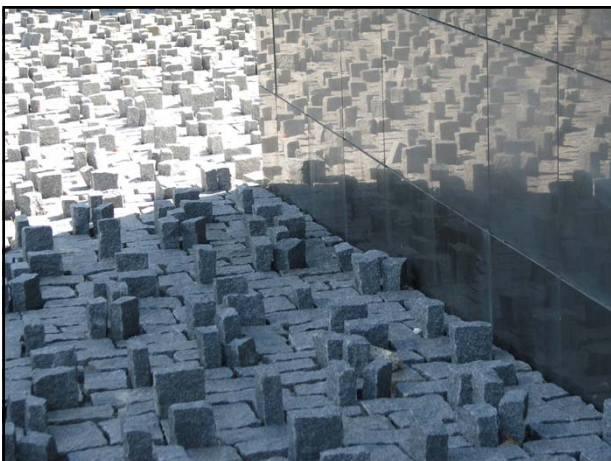
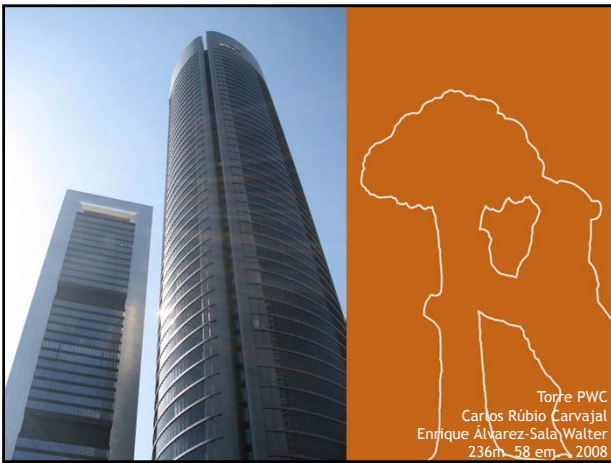
Torre PWC  
Carlos Rúbio Carvajal  
Enrique Álvarez-Sala Walter  
236m 58 em. 2008

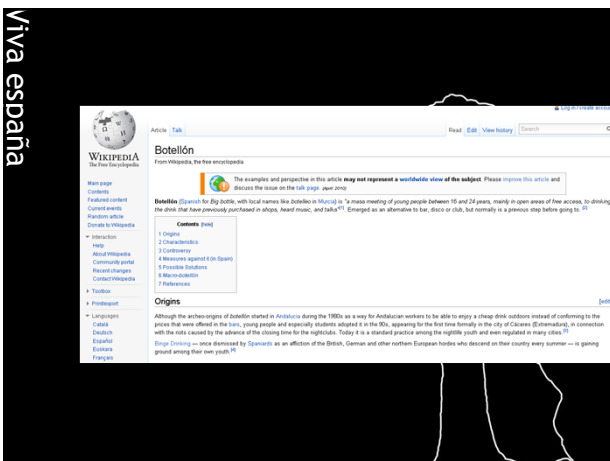
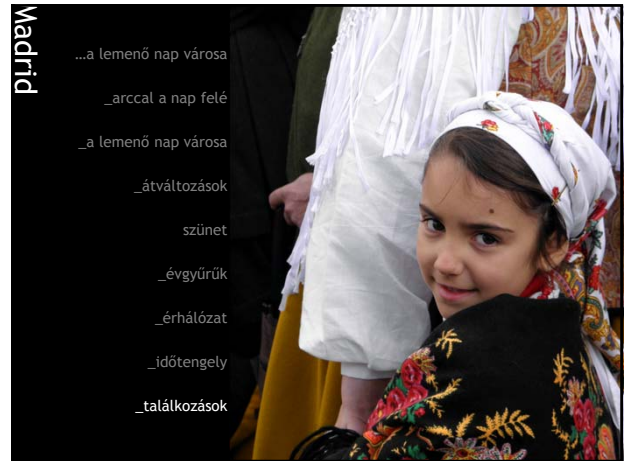
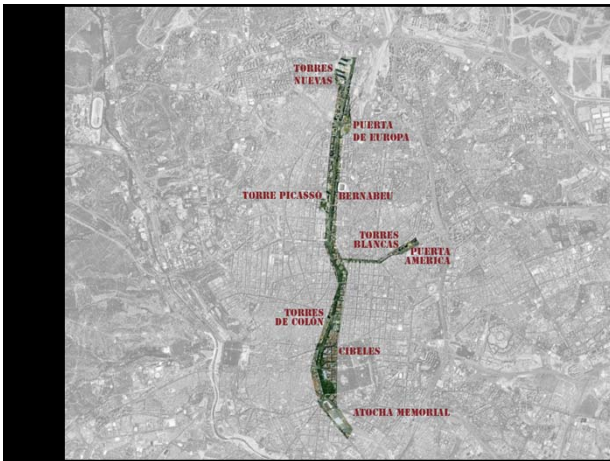
Torre de Cristal  
Cesar Pelli  
249m 52 em. 2009

Torre Espacio  
Henry N. Cobb - I.M. Pei  
230m 57 em. 2007







Viva españa



Viva españa



Viva españa



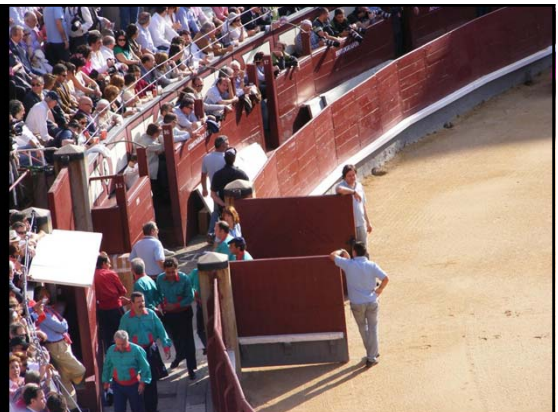
Viva españa

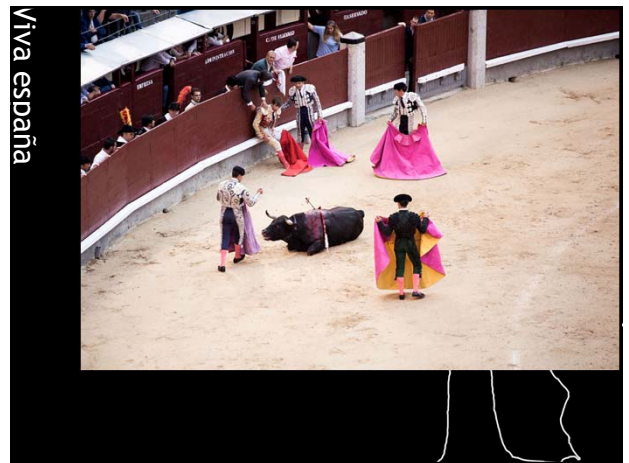
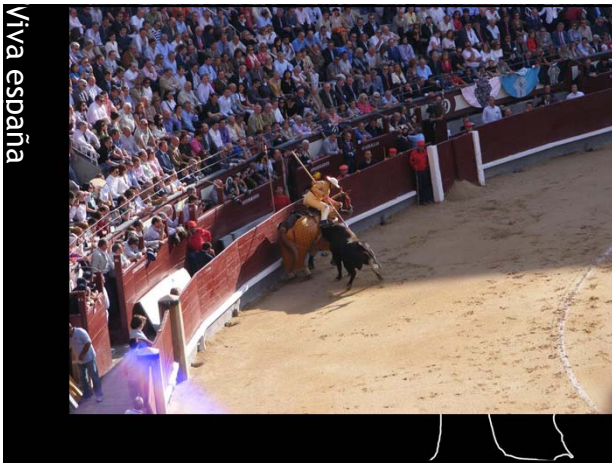
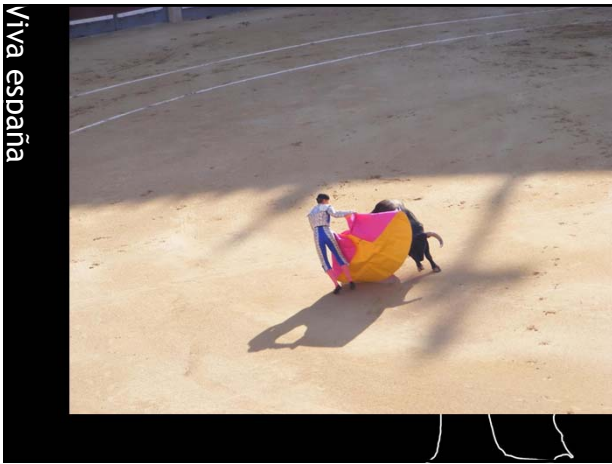


Viva españa



Viva españa

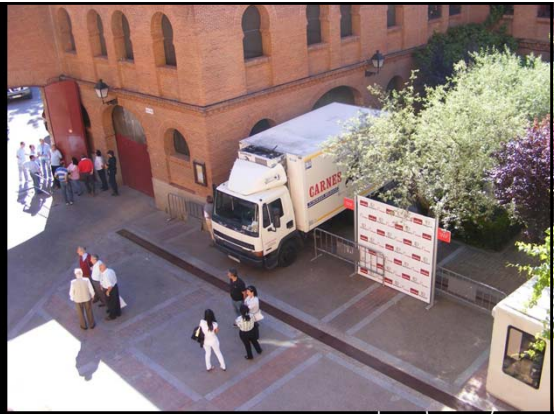




Viva españa



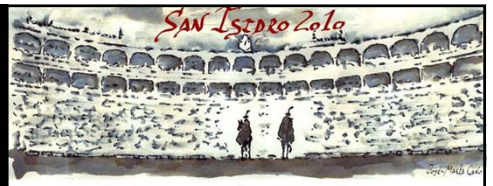
Viva españa



Viva españa



Viva españa



Viva españa



Viva españa



